



7 Echo Bank, Inverkeithing, Fife, KY11 1AT

Beautifully Presented, One Bedroom, Upper Villa with Private Balcony

Up to date price and viewing info at [mov8realestate.com/property](https://www.mov8realestate.com/property)

éspsc rightmove[®] Zoopla
find your happy

Property Description

Beautifully presented, one-bedroom, upper villa with a private balcony and views of the Forth bridges. Perfectly located for the commuter, with the ferry, bus and rail terminals all in close proximity, the property is set on a residential street in the coastal town of Inverkeithing, Fife. Comprises an entrance hall, living room, kitchen, double bedroom and a bathroom.

Features include uPVC double glazing, gas central heating, excellent integrated storage space including an attic, fresh modern decor and TV and telephone points. Externally, there is a shared drying green to the side, and ample on-street parking to the rear.

Accessed via a private stairway, the carpeted entrance hall has a built-in cupboard and serves each room in the property. To the rear, the bright and well-proportioned living room has wood laminate flooring, a large picture window affording lots of natural light and a door opening onto the balcony which enjoys panoramic views of the Edinburgh skyline, the Forth and the three bridges.

With a large pantry cupboard, the kitchen is fitted with modern units, stone effect worktops, a stainless steel sink, and an integrated gas hob, electric oven, microwave, and a freestanding fridge and washer/dryer.

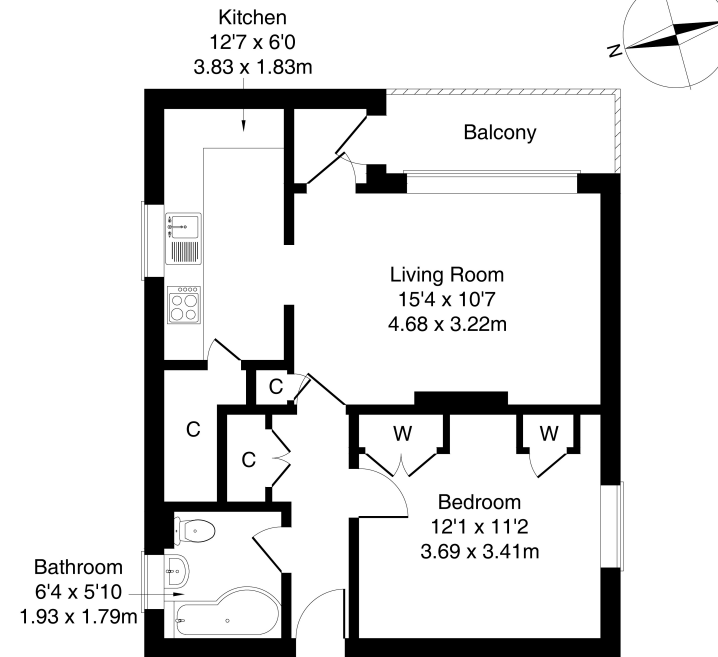
The double bedroom is to the side of the property with carpeted flooring, two built-in wardrobes and space for freestanding bedroom furniture. Whilst the bathroom is fitted with a contemporary, white three-piece suite with storage units, a mains over-bath shower and modern panel splashbacks.

A 360 Virtual Tour is available online.



7 Echo Bank, Inverkeithing, Fife, KY11 1AT

Approximate Gross Internal Area: (527 sq ft - 49 sq m.)



Legal Disclaimer : Floor-plan and measurements are for illustrative guidance only, and not intended to form part of any contract.

Area Description

Inverkeithing, on the northern banks of the Forth in Fife, is a town, royal burgh and parish. A stone-built medieval town centre has a bustling high street, whilst more modern residential developments continue to be added at the peripheries. Conveniently placed for access to the M90, Forth Road Bridge, Ferry Toll Park & Ride, and Inverkeithing Rail Station, the town is ideal for commuters. Good local

shopping and amenities can be found on Inverkeithing High Street, whilst a short drive takes you to the town of Dunfermline, which provides a larger selection of high-street shopping, supermarkets, schools, bars, restaurants, and also further bus and rail links. Inverkeithing Primary School and Inverkeithing High School provide local schooling.





Our Services

- Free pre-sale property valuations
- Great value fixed estate agency fees
- Extensive buyer matching database
- Purchase and sale conveyancing

Contact Us

0345 646 0208

sales@mov8realestate.com

www.mov8.com

Head Office

6 Redheughs Rigg, Edinburgh, EH12 9DQ

Glasgow Office

77 Renfrew Street, Glasgow, G2 3BZ



Estate Agents and Solicitors

