

FOR SALE

£649,950 Freehold



**WOODHOUSE**  
PROPERTY CONSULTANTS

# 190 Longfield Lane, Cheshunt, Hertfordshire. EN7 6AQ

Head Office  
7, Turners Hill, Cheshunt, Waltham Cross, EN8 8NQ

01992 637777  
[info@woodhouseproperty.co.uk](mailto:info@woodhouseproperty.co.uk)

## ABOUT THE PROPERTY

Woodhouse are pleased to offer this beautifully-presented Semi-Detached home in a sought-after neighbourhood of West Cheshunt, offered CHAIN-FREE.

This family home offers deceptively spacious accommodation comprising to the ground floor a large Reception Room that leads to a lovely Kitchen-Diner (which also comes with a Utility Room). There is a Cloakroom before heading upstairs. To the 1st Floor there are the 4 x Bedrooms and the Family Bathroom. The Msster Bedroom also benefits from its own 5-piece Ensuite.

Outside to the rear is the fantastic garden. Approx 100 ft deep, it offers patio area, fruit trees and colourful shrubbery. To the front of the house there is a driveway for two cars that also leads to the Garage.

Longfield Lane is located in a desirable neighbourhood of the sought-after West Cheshunt. There are several coveted schools in the catchment area, for both Primary & Secondary. It's about a mile's walk away from Brookfield Centre (plenty of shops and eateries here). A short drive away you are between the High Streets of Goffs Oak, Cuffley & Cheshunt.

For transport links, you are between two stations. Cuffley takes you straight into Moorgate, and Cheshunt takes only 20 minutes to Liverpool Street. And for road links both the A10 & M25 are only minutes drive away.

There is plenty of greenery nearby such as Broxbourne Woods and Lea Valley Nature Reserve (a vast area encompassing heritage sites, cycling, walking, and wide open spaces).

Viewings are highly recommended to come and see what this impressive home has to offer you and your family! Contact Woodhouse today, viewings are available 7 days a week.

## FEATURES

- NO CHAIN
- Immaculate Semi-Detached Family Home
- 4 x Bedrooms
- Master Bedroom with 5-piece Ensuite
- Large Reception Room
- Kitchen-Diner
- Utility Room
- Beautiful Garden approx 100 ft deep
- Garage & Driveway
- Catchment area for amazing schools (Primary & Secondary)





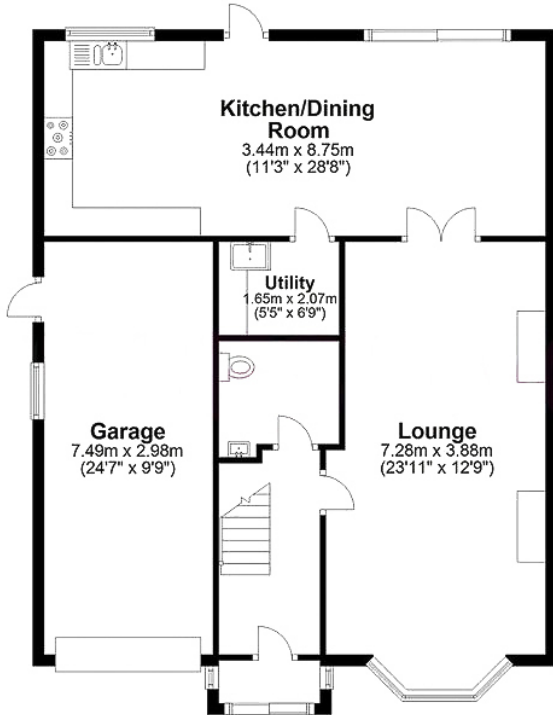
## ROOM DESCRIPTIONS



# FLOORPLAN

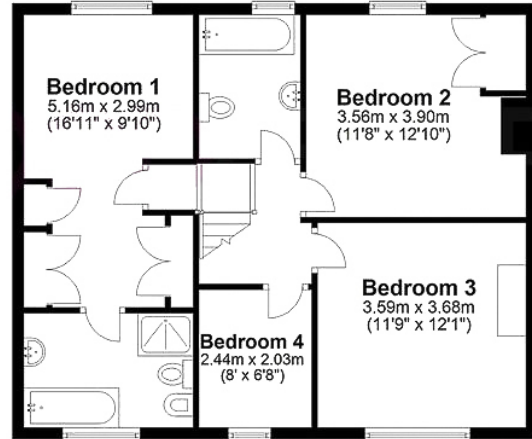
## Ground Floor

Approx. 97.8 sq. metres (1053.0 sq. feet)



## First Floor

Approx. 64.5 sq. metres (694.1 sq. feet)



Total area: approx. 162.3 sq. metres (1747.1 sq. feet)

FOR ILLUSTRATIVE PURPOSES ONLY. NOT TO SCALE  
Whilst every attempt has been made to ensure the accuracy of the floor plan shown, all measurements, positioning, fixtures, features, fittings and any other data shown are an approximate interpretation for illustrative purposes only and are not to scale. No responsibility is taken for any error, omission, mis-statement or use of data shown.

