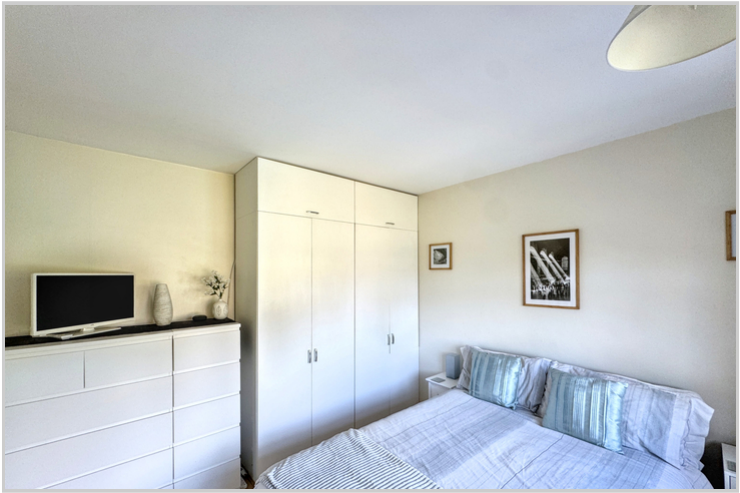


3 Heath Side, Petts Wood, Orpington, Kent, BR5 1EY

## Property Images

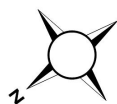
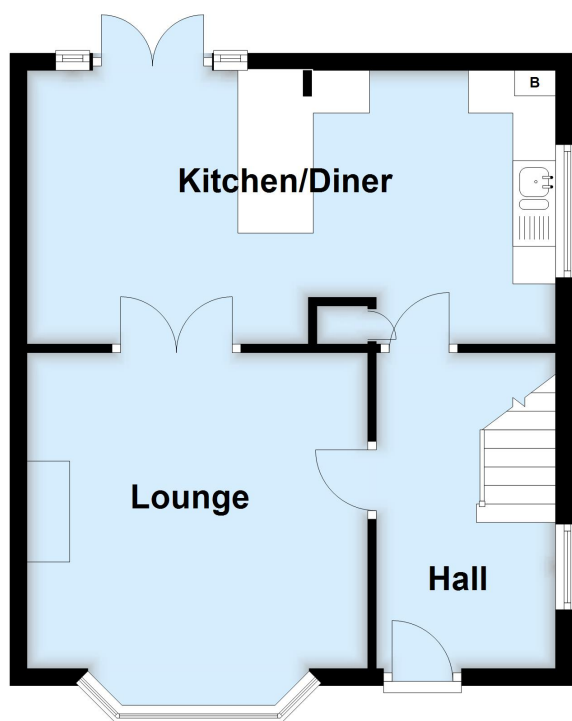






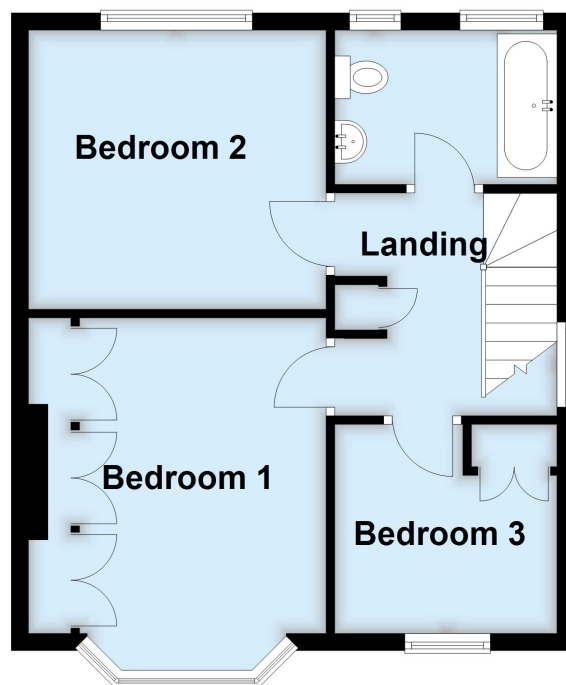
## Ground Floor

Approx. 43.7 sq. metres (470.8 sq. feet)



## First Floor

Approx. 44.1 sq. metres (474.3 sq. feet)



Total area: approx. 87.8 sq. metres (945.1 sq. feet)

This plan is for general layout guidance and may not be to scale.  
Plan produced using PlanUp.