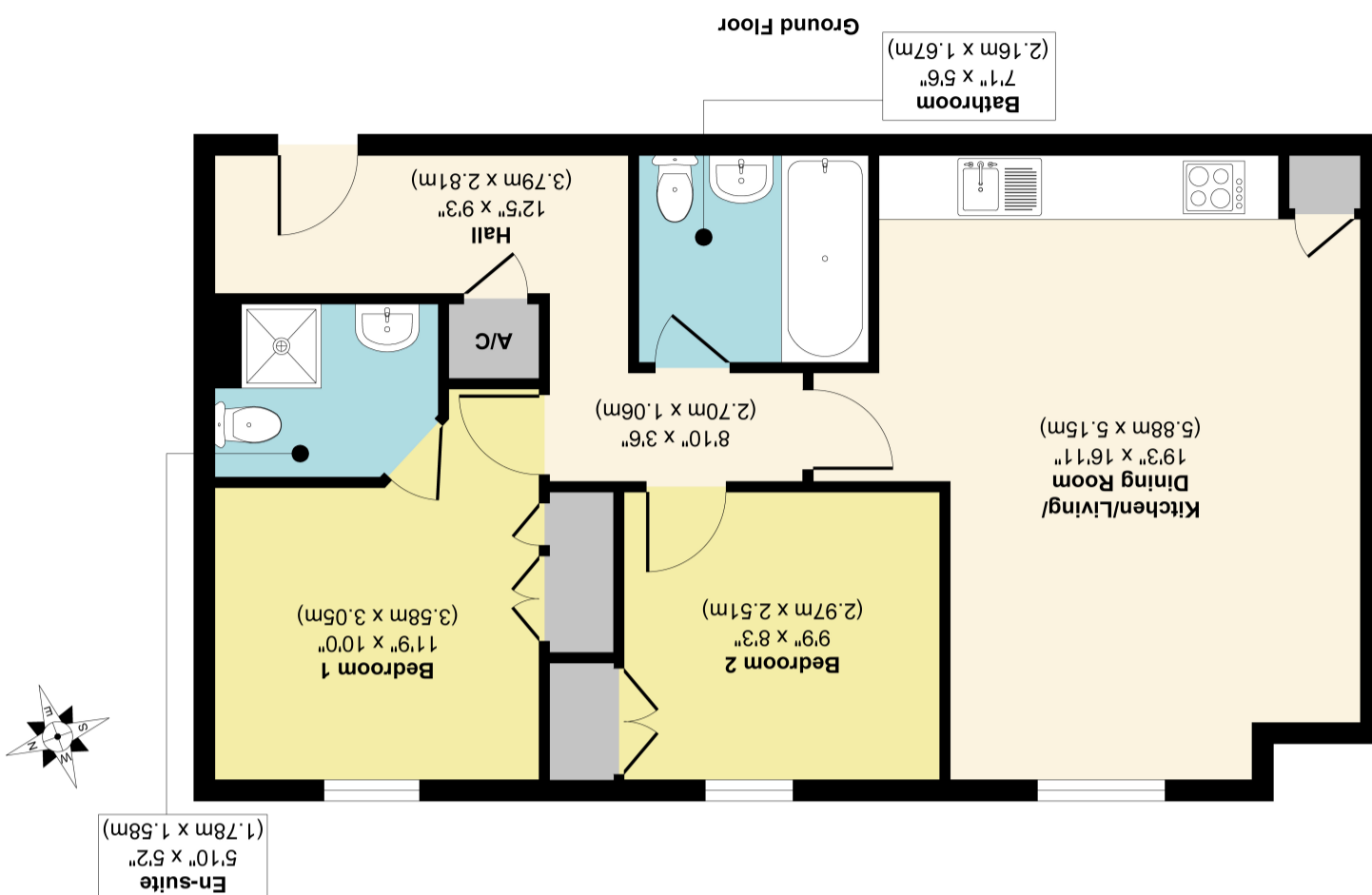


Approx. Gross Internal Floor Area 676 sq. ft / 62.83 sq. m
 Illustration for identification purposes only, measurements are approximate, not to scale.
 Produced by Elements Property



Masters Mews, Dringhouses, York YO24 1UG

Offered for sale with the benefit of no onward chain is this well maintained ground floor apartment situated just off the desirable Tadcaster Road. The well proportioned apartment briefly comprises; entrance hallway with storage cupboard, double bedroom with fitted wardrobes and immaculate ensuite shower room, a second double bedroom which also benefits from fitted wardrobes, a three piece bathroom and modern open plan living / dining / kitchen area.

Coming with its own allocated parking space, conveniently located next to the entrance, visitors parking, bike and bin store and within easy walking distance to York College and Tesco Extra. The property is an ideal first time buy, a great investment purchase or even a suitable downsize and is likely to generate high interest levels therefore early viewing is highly recommended.

Lease started 2013 for 125 years

Management / Service Charge: Approx £900PA

Ground Rent: Approx £200PA

Annual Review Period

PLEASE NOTE: AWAITING PROBATE

- No Onward Chain
- Ground Floor Apartment
- Modern Kitchen
- Ensuite Shower Room
- Open Plan Living
- Very Well Maintained
- Allocated Parking Space
- Local Amenities Nearby

Travelling from the A64 towards York on Tadcaster Road. At the roundabout take the fourth exit onto Principal Rise. The apartment is situated in Masters Mews in the first building from the roundabout on the left hand side where the entrance is in the far left corner.

Dringhouses positioned on the Southern outskirts of York Centre is ideal for the commuter wanting access to the centre and A64 and in turn the motorway network or A1237, A19 or A1079. Local shopping and leisure facilities can be found in the area plus Tesco and the Park and Ride. York Racecourse can also be found close by ideal for race meetings and walks.

