



Miradores 426

La Manga Club

£120.000

- 65m2 approx.
- Easy Access
- Central Location
- Two Bedrooms
- Two Bathrooms
- Views Over La Manga Club
- Winter Sunshine
- Sports Rights
- Close to all Amenities

E

Call : **+34 968 175 087**

Email: info@marenamurrayproperty.com

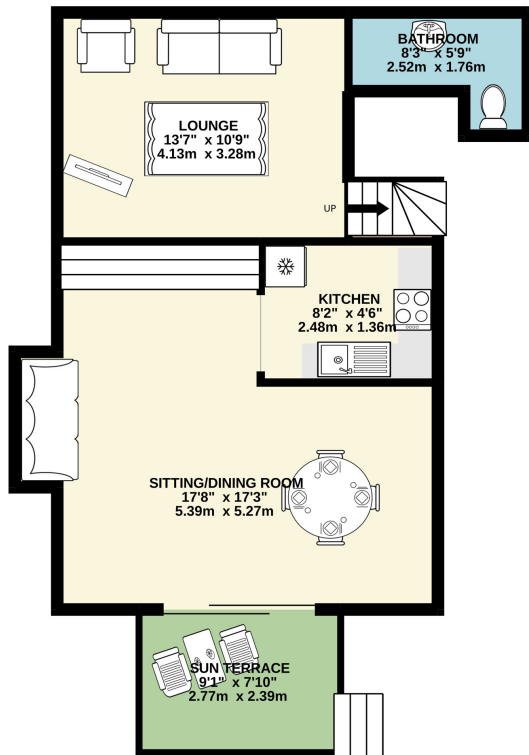
Miradores 426 La Manga Club

£120.000

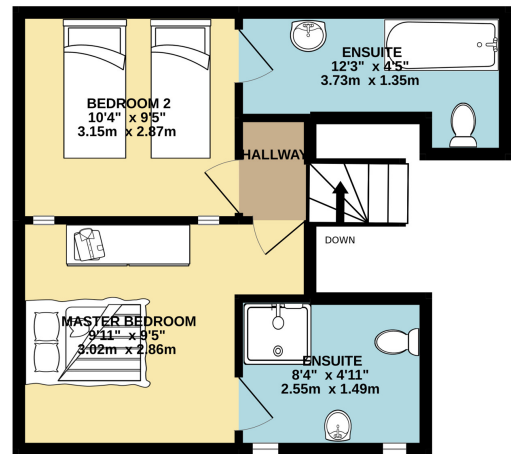
A little gem in the centre of this popular community constructed in 1977. Easily accessible and in a fantastic position to enjoy all year sunshine. Highly recommended for immediate viewing, we present this, refurbished and picturesque apartment, situated in one of the most central locations, close to all amenities. With the large lounge and dining area divided by three small steps, the areas seem separated whilst still open planned. This allows the space to feel much bigger with light flooding through from the sliding patio doors, this being one of its many appealing features. You cannot fail to be impressed by the two bedrooms as both enjoy their own private en-suite bathroom and the master is open to and looking down into the dining area. Benefiting from natural light beaming through the patio doors. The space is lovely internal viewing is a must to appreciate the space on offer. An ideal property if you are looking to use the property is an easy to maintain bolt hole. Please contact us to arrange a viewing.

Community fees: 874.16 euros every six months with a 20% discount if paid on time. Club fees: 879.49 €

GROUND FLOOR
518 sq.ft. (48.2 sq.m.) approx.



1ST FLOOR
382 sq.ft. (35.5 sq.m.) approx.



TOTAL FLOOR AREA : 900 sq.ft. (83.6 sq.m.) approx.

Whilst every attempt has been made to ensure the accuracy of the floorplan contained here, measurements of doors, windows, rooms and any other items are approximate and no responsibility is taken for any error, omission or mis-statement. This plan is for illustrative purposes only and should be used as such by any prospective purchaser. The services, systems and appliances shown have not been tested and no guarantee as to their operability or efficiency can be given.
Made with Metropix ©2022

