



FRANCIS ROAD, HARROW

£4,000 pcm

**** HMO LICENCE FOR NINE MULTIPLE OCCUPANTS**
**** A six bedroom (three doubles, three singles), three bathroom semi detached house that would ideally suit sharers or students as the house is licenced for up to nine people. Located close to the University of Westminster and within walking distance of Harrow's Town Centre with its bars, restaurants and multi screen cinema, the property is to be let part furnished. AVAILABLE IMMEDIATELY!**

- HMO LICENCE FOR NINE MULTIPLE OCCUPANTS
- AVAILABLE IMMEDIATELY
- SIX BEDROOMS
- THREE DOUBLE BEDROOMS & THREE SINGLE BEDROOMS
- THREE BATHROOMS
- COMMUNAL KITCHEN/DINING AREA
- PRIVATE REAR GARDEN
- DOUBLE GLAZING AND GAS CENTRAL HEATING
- LARGE PRIVATE REAR GARDEN
- CONVENIENTLY LOACED FOR SHOPS AND TRANSPORT LINKS
- LOCATED CLOSE TO THE UNIVERSITY OF WESTMINSTER
- OFF STREET PARKING

Ground Floor

Hallway

Communal Kitchen/Dining Area

18' 4" x 18' 2" (5.59m x 5.54m)

Bedroom Four

14' 3" x 12' 7" (4.34m x 3.84m)

Bedroom Five

11' 6" x 6' 9" (3.51m x 2.06m)

Bedroom Six

11' 5" x 6' 9" (3.48m x 2.06m)

Bathroom

6' 8" x 5' 7" (2.03m x 1.70m)

Shower Room

7' 5" x 4' 10" (2.26m x 1.47m)

First Floor

Landing

Bedroom One

14' 5" x 10' 0" (4.39m x 3.05m)

Bedroom Two

11' 10" x 10' 7" (3.61m x 3.23m)

Bedroom Three

8' 8" x 8' 7" (2.64m x 2.62m)

Bathroom

8' 8" x 5' 9" (2.64m x 1.75m)

Separate W/C

Outside

Front Garden

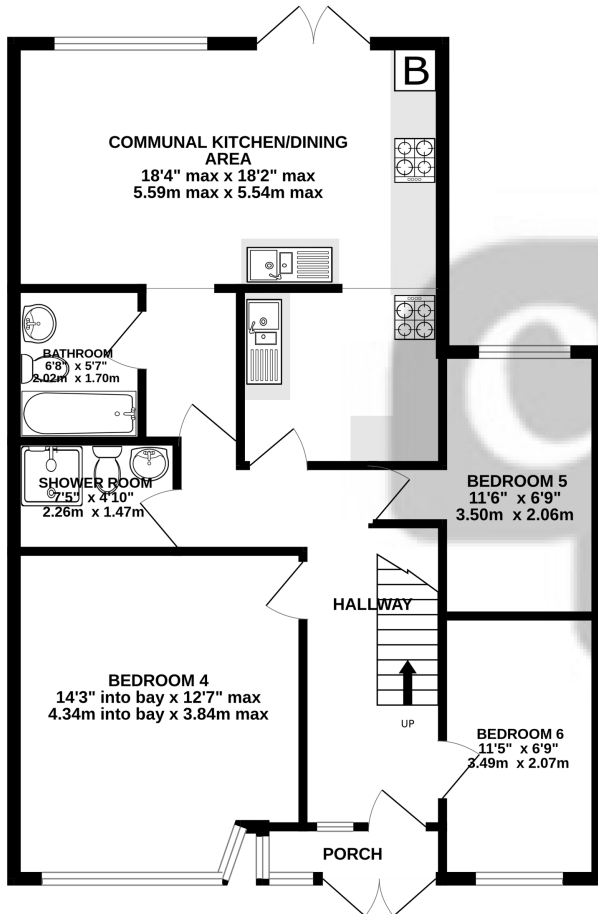
Off street parking.

Private Rear Garden

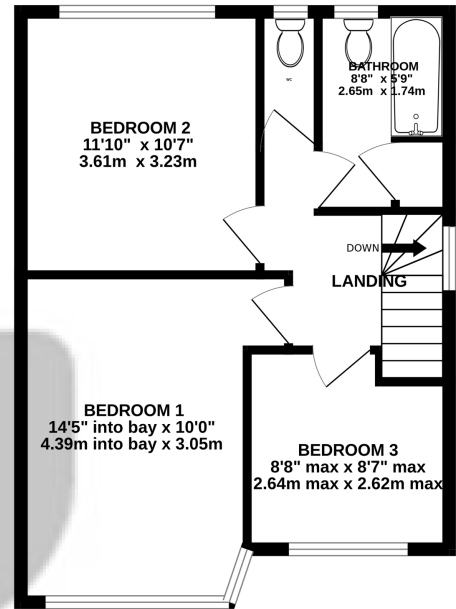


DISCLAIMER: These particulars, whilst believed to be accurate are set out as a general outline only for guidance and do not constitute any part of an offer or contract. Intending purchasers should not rely on them as statements or representation of fact, but must satisfy themselves by inspection or otherwise as to their accuracy. We have not carried out a detailed survey nor tested the services, appliances and specific fittings. Room sizes should not be relied upon for carpets and furnishings. The measurements given are approximate. No person in this firms employment has the authority to make or give any representation or warranty in respect of the property.

GROUND FLOOR
831 sq.ft. (77.2 sq.m.) approx.



1ST FLOOR
459 sq.ft. (42.6 sq.m.) approx.



TOTAL FLOOR AREA : 1290 sq.ft. (119.9 sq.m.) approx.

Whilst every attempt has been made to ensure the accuracy of the floorplan contained here, measurements of doors, windows, rooms and any other items are approximate and no responsibility is taken for any error, omission or mis-statement. This plan is for illustrative purposes only and should be used as such by any prospective purchaser. The services, systems and appliances shown have not been tested and no guarantee as to their operability or efficiency can be given.
Made with Metropix ©2025