



Garrison Court

Hitchin,
Hertfordshire, SG4 9AA
£240,000

country
properties

A second floor two bedroom apartment conveniently located in a popular art deco development in the heart of the town centre offered for sale with no onward chain.

Presented in good order throughout this delightful apartment features two bedrooms, spacious living room and separate kitchen as well a stylish family bathroom.

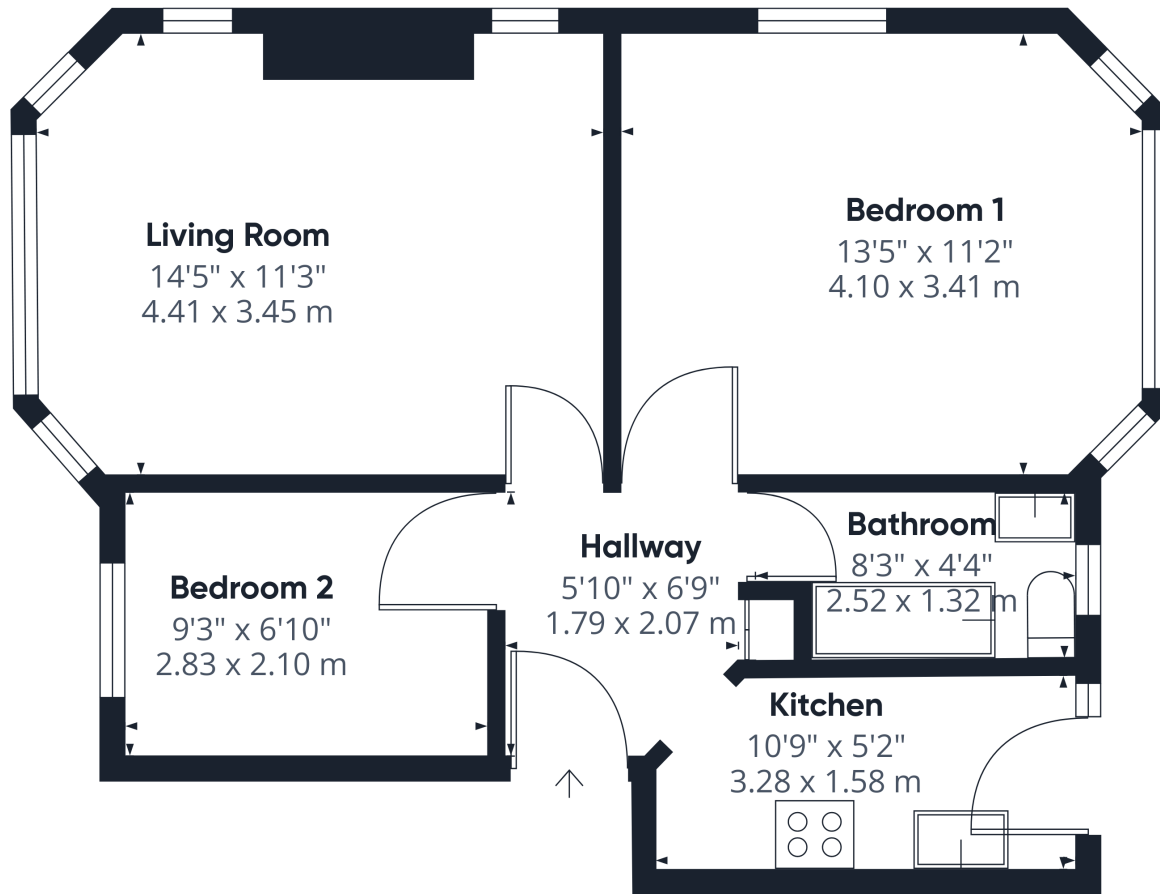
We have been advised by the vendor that the remaining lease on the property is 88 years, with a Service Charge of £903 per annum along with a Ground Rent of £200 per annum.

Hitchin is a charming medieval market town and has many fine Tudor and Georgian buildings, particularly around the market square. Near to the market square stands the large medieval parish church of St Mary. The town provides good shopping as well as a swimming pool, football team, two theatres, a wide variety of restaurants and pubs and highly regarded girls and boys schools. There is also a mainline railway station providing direct access to Kings Cross and Cambridge.

- Two bedroom second floor apartment
- Living room with separate kitchen
- Central location
- Chain free
- 0.7 miles, 15 min walk to Hitchin train station (as per Google maps)





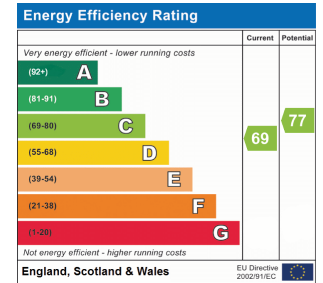


Approximate total area⁽¹⁾
495.01 ft²
45.99 m²

(1) Excluding balconies and terraces

While every attempt has been made to ensure accuracy, all measurements are approximate, not to scale. This floor plan is for illustrative purposes only.

GIRAFFE360



All measurements are approximate and quoted in metric with imperial equivalents and for general guidance only and whilst every attempt has been made to ensure accuracy, they must not be relied on. The fixtures, fittings and appliances referred to have not been tested and therefore no guarantee can be given and that they are in working order. Internal photographs are reproduced for general information and it must not be inferred that any item shown is included with the property. For a free valuation, contact the numbers listed on the brochure.

Viewing by appointment only

Country Properties | 6, Brand Street | SG5 1HX
T: 01462 452951 | E: hitchin@country-properties.co.uk
www.country-properties.co.uk

country
properties