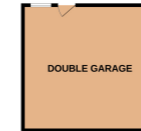
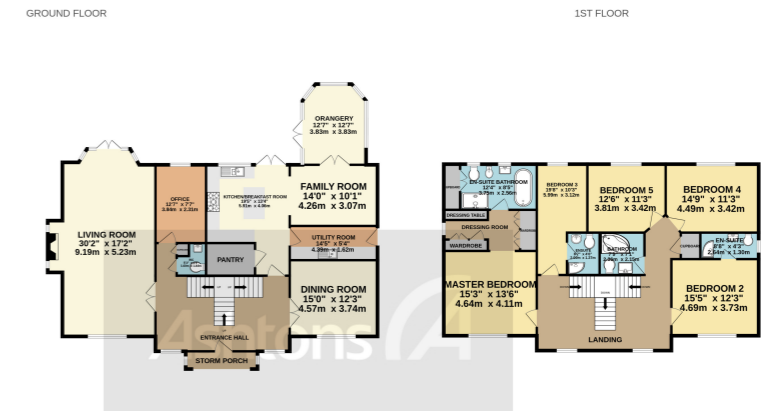


Bellcast Close, Appleton, WA4 5SA £1,275,000



Sold
Subject to Contract

Whilst every attempt has been made to ensure the accuracy of the floorplan contained here, measurements of doors, windows, rooms and any other items are approximate and no responsibility is taken for any error, omission or mis-statement. This plan is for illustrative purposes only and should be used as such by any prospective purchaser. The services, systems and appliances shown have not been tested and no guarantee as to their operability or efficiency can be given.
Made with Metropix ©2023



Situated on the exclusive 'The Hamptons' development, this remarkable family home encapsulates the epitome of luxurious living. With its meticulous design, captivating features, and proximity to the esteemed Warrington Golf Club, this property offers an unrivaled opportunity to embrace a lifestyle of distinction and elegance.

See more of this house at [ashtons.net](https://www.ashtons.net)

x 5 x 4

