

68 Blunden Drive

FOLKESTONE,
CT20 3TZ

£350,000 FREEHOLD

FOR SALE WITH BURNAP + ABEL... Welcome to this charming 3 bedroom End Terraced house located on the sought-after Blunden Drive in Folkestone. Step inside and be greeted by a spacious lounge, perfect for relaxing or entertaining guests. Modern kitchen/Diner and family bathroom. The master bedroom boasts an en-suite, providing privacy and convenience. Outside, the large south facing corner plot is ideal for enjoying sunny days and al fresco dining. With a driveway that can accommodate 2 cars, parking will never be an issue. Don't miss out on the opportunity to make this house your home - schedule a viewing today and start envisioning your life in this wonderful property on Blunden Drive.



Entrance Hall

Lounge

13' 6" x 11' 9" (4.11m x 3.58m)

Cloakroom/W.C

Kitchen/Dining Room

15' 2" x 9' 1" (4.62m x 2.77m)

First Floor Landing

Bedroom One

10' 9" x 9' 3" (3.28m x 2.82m)

En-Suite

Bedroom Two

10' 6" x 8' 5" (3.20m x 2.57m)

Bedroom Three

11' 3" x 6' 0" (3.43m x 1.83m)

Bathroom

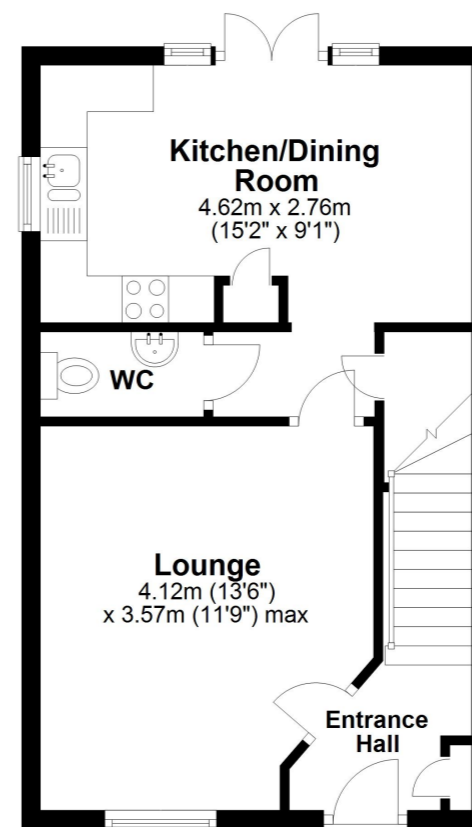
6' 4" x 5' 3" (1.93m x 1.60m)

Rear Garden

Off Road Parking

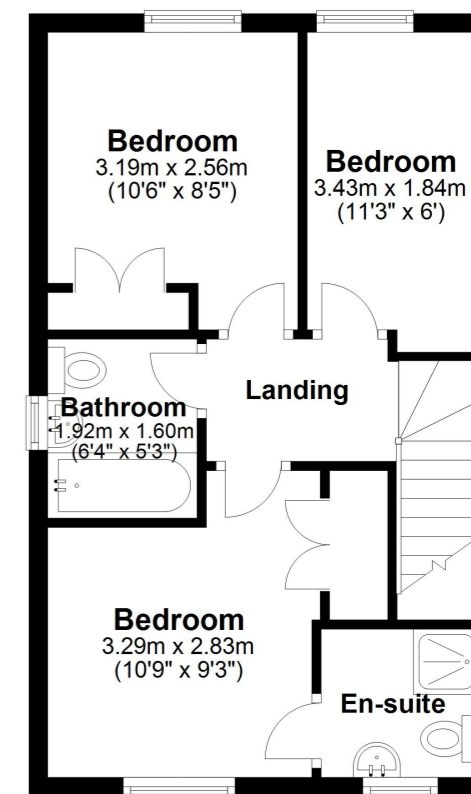
Ground Floor

Approx. 36.9 sq. metres (397.3 sq. feet)



First Floor

Approx. 42.7 sq. metres (459.5 sq. feet)



Whilst every attempt has been made to ensure the accuracy of the floor plan contained here, measurements of doors, windows, rooms and any other items are approximate and no responsibility is taken for any error, omission or mis-statement. This plan is for illustrative purposes only and should be used as such by any prospective purchaser. Plan produced using PlanUp.

