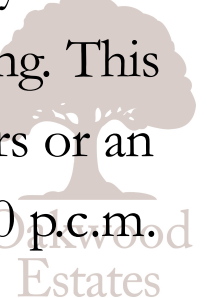


This well-proportioned three bedroom terraced house is tucked away on a quiet residential cul-de-sac and located just a short drive from Windsor town centre. The ground floor provides open plan living inclusive of 18ft kitchen/dining area and 14ft living room and a cloakroom. The first-floor features three double bedrooms, inclusive of 12ft master bedroom with built in storage and a three-piece family bathroom. Externally, the property is set back with a secluded front garden and a good size rear garden mainly laid to lawn with patio area. There is also ample on street parking. This property would be an ideal purchase for first time buyers or an investment buyer with potential rental income of £1,700 p.c.m.



Property Information

-  THREE DOUBLE BEDROOMS
-  OPEN PLAN KITCHEN/DINER
-  PRIVATE & SECURE REAR GARDEN
-  COUNCIL TAX BAND - D
-  QUIET RESIDENTIAL ROAD
-  CLOAKROOM
-  NO ONWARD CHAIN
-  EPC - C

					
x3	x2	x1	0	Y	N
Bedrooms	Reception Rooms	Bathrooms	Parking Spaces	Garden	Garage

External

This ideal family home benefits from both a front and back garden with ample on street parking.

Transport Links

Train Stations:

Windsor and Eton Riverside (2.3 miles)

Windsor and Eton Central (2.1 miles)

Datchet (Waterloo line) (5.1 miles)

Primary Schools

Hilltop First School - State School (0.4 miles)

Dedworth Green First School - State School (0.5 miles)

Clewer Green C of E Aided First School - State School (0.7 miles)

Oakfield First School - State School (1.2 miles)

Secondary Schools

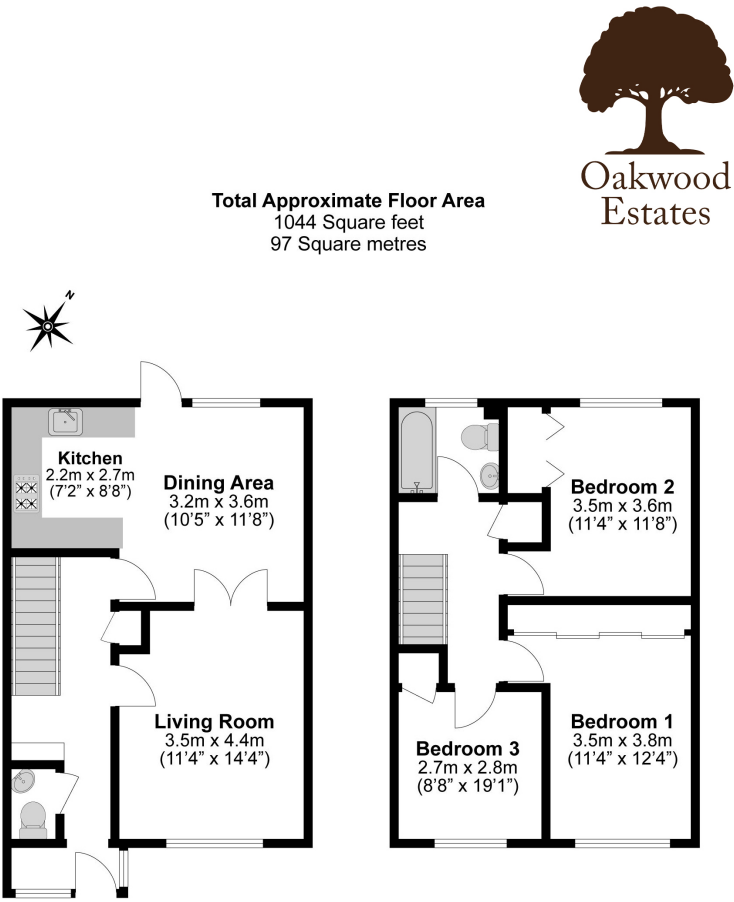
Windsor Girls School - State School (1.0 mile)

Windsor Boys School - State School (1.6 miles)

Churchmead School - State School (5.1 miles)

Council Tax
Band D

Floor Plan



Illustrations are for identification purposes only,
measurements are approximate, not to scale.

Prospective purchasers should be aware that these sales particulars are intended as a general guide only and room sizes should not be relied upon for carpets or furnishing. We have not carried out any form of survey nor have we tested any appliance or services, mechanical or electrical. All maps are supplied by Goview.co.uk from Ordnance Survey mapping. Care has been taken in the preparation of these sales particulars, which are thought to be materially correct, although their accuracy is not guaranteed and they do not form part of any contract.

