

Middleton Close

Warminster, BA12 8JT

COOPER
AND
TANNER



£215,000 Freehold

 2  1  1 EPC C

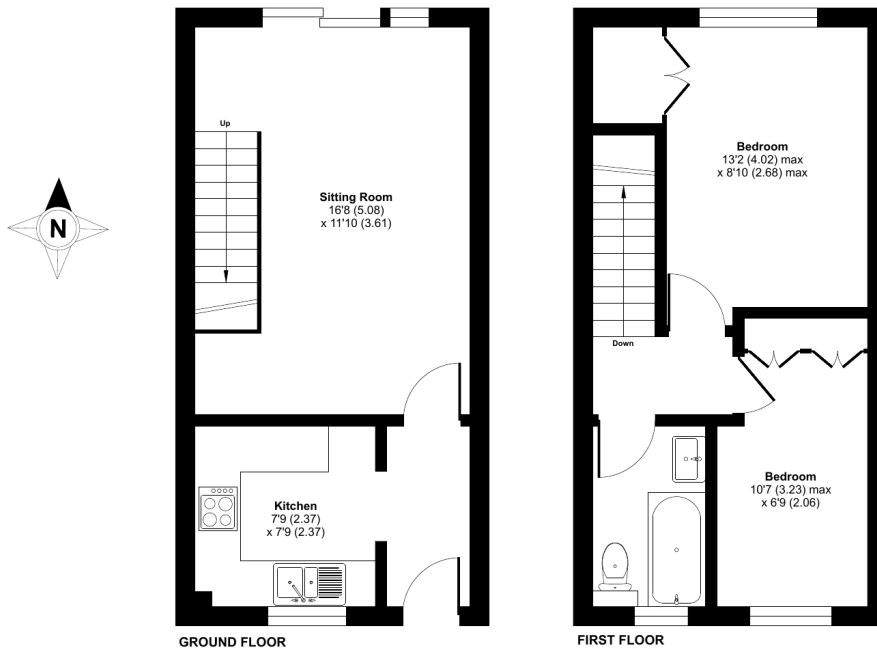
Description

Cooper and Tanner are pleased to present this two bedroom terraced property situated in a quiet cul-de-sac. The property benefits from off street parking as well as no onward chain making it a brilliant opportunity for first time buyers or investors. In brief, the accommodation comprises kitchen which has a range of wall and base units, living/dining room with doors leading into an enclosed rear garden, two bedrooms and bathroom. Outside to the front of the property, there is off road parking and at the rear there is a private and enclosed garden.

Middleton Close, Warminster, BA12

Approximate Area = 590 sq ft / 54.8 sq m

For identification only - Not to scale



Floor plan produced in accordance with RICS Property Measurement 2nd Edition, incorporating International Property Measurement Standards (IPMS2 Residential). © nichcom 2025. Produced for Cooper and Tanner. REF: 1331353



Features

- Two bedrooms
- Off road parking
- Living / dining Room & separate kitchen
- No onward chain
- Quiet & popular cul de sac location
- Close to amenities

Local Information

- **Tenure** Freehold
- **EPC Rating** C

WARMINSTER OFFICE

Telephone 01985 215579

48-50, Market Place, Warminster, Wiltshire BA12 9AN

warminster@cooperandtanner.co.uk

**COOPER
AND
TANNER**

Important Notice: These particulars are set out as a general outline only for the guidance of intended purchasers and do not constitute, nor constitute part of, an offer or contract. All descriptions, dimensions, reference to condition and necessary permissions for use and occupation, warranties and other details are given without responsibility and any intending purchasers should not rely on the same as statements or representations of fact but must satisfy themselves by inspection or otherwise as to the correctness of each of them.

