



Mortimer Crescent, London, NW6 5UT

Cow & Co
LONDON



GUIDE PRICE OF £400,000-500,000. This larger than average two double bedroom apartment in a well maintained purpose built block is situated in a popular residential location. The property enjoys an abundance of natural light throughout, having a contemporary feel combined with the warmth of wood flooring and original features. There is a large kitchen and a bright sitting room with a dining area perfect for entertaining. Further benefits are a good sized bathroom with separate WC, a large balcony and well kept communal gardens.

The apartment borders St John's Wood and Maida Vale and is close to all amenities. The transport links are excellent, being twenty minutes to Oxford Street by bus and near to Maida Vale and Kilburn Park tube stations 20 minutes to Oxford Circus. Kilburn High Road Overground is a short walk away and from there it only takes ten minutes to get to Euston.

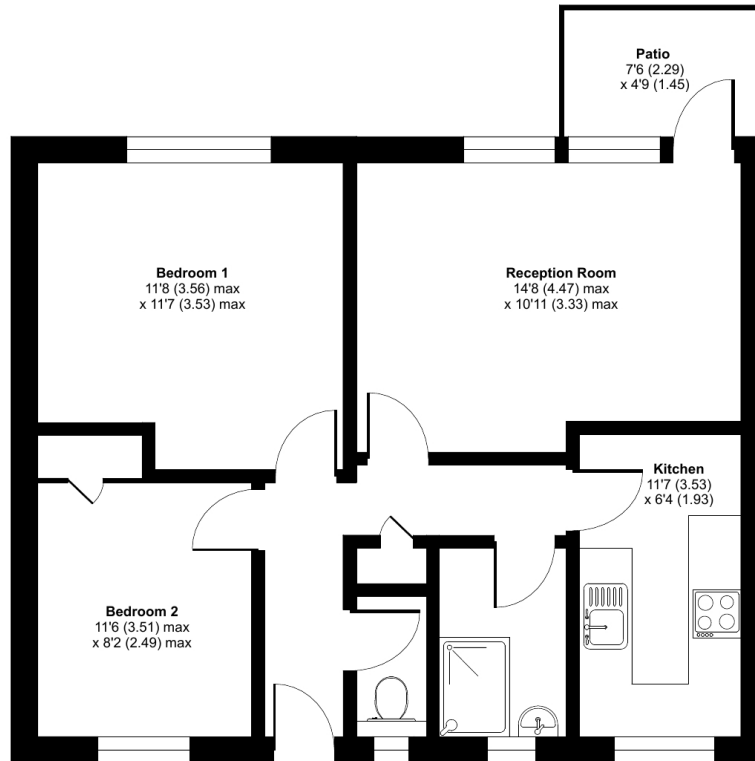


- Two double bedroom apartment situated in popular location
- Private entrance to the property
- Balcony
- Ground Floor
- Modern Kitchen
- Wooden floors
- Communal garden
- Five minutes walk to Kilburn High Road Overground

Remsted House, Mortimer Crescent, London, NW6

Approximate Area = 585 sq ft / 54.3 sq m

For identification only - Not to scale



GROUND FLOOR



Floor plan produced in accordance with RICS Property Measurement Standards incorporating International Property Measurement Standards (IPMS2 Residential). © nchecon 2023. Produced for Cow & Co Properties Ltd. REF: 981118

Tel: 0208 065 0010
Email: thehub@cowandco-london.com
Web: cowandco-london.com

Agents note: All measurements are approximate and whilst every attempt has been made to ensure accuracy they are for general guidance only and must not be relied on. The fixture and fittings referred to have not been tested and therefore no guarantee can be given that they are in working order. Internal photographs are reproduced for general information and it must not be inferred that any item shown is included with the property.

Cow & Co
LONDON