



**17 Blaydon Close, Bletchley, Milton
Keynes, Buckinghamshire, MK3 5LS**

£235,000 Freehold

- Driveway for 2 cars
- Desirable location of Bletchley
- Two double bedrooms
- Kitcher/diner
- Cul de sac location
- Walking distance of local amenities
- EPC Rating





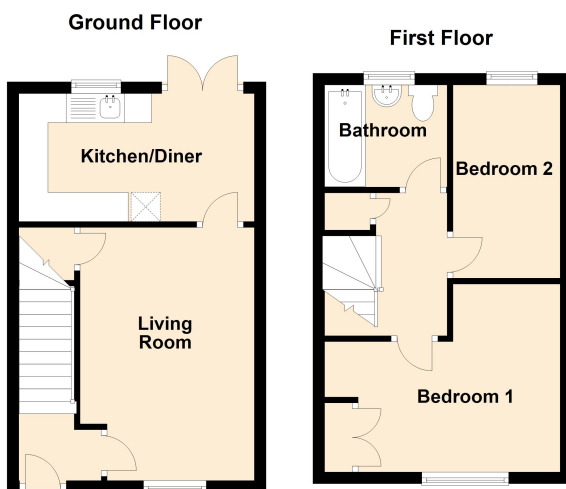
This well maintained two double bedroom semi detached house is located in the desirable location of Bletchley. In short the property comprises of entrance hall, living room, kitchen/ diner with patio doors to the well sized rear garden. The top floor comprises of two double bedrooms and family bathroom.

The property also benefits from quiet cul de sac location with off-road parking for two cars.

To arrange a viewing call Elevation today!

Disclaimer

Whilst we have endeavoured to prepare our sales particulars accurately none of the services, appliances or equipment have been tested. A buyer should satisfy themselves on such matters prior to purchase. Any measurements or distances mentioned in these particulars are for guide reference only. If such particulars are fundamental to a purchase, buyers should rely on their own enquiries. All enquiries should be directed to Elevation Estate Agents in the first instance.



Floor plans are for layout purposes only
Elevation
Plan produced using PlanUp.