



Bethel Terrace  
Torquay  
Devon  
TQ1

Offers In Excess Of £215,000

bettermove



# Bethel Terrace

## Torquay

Bettermove are proud to present this 3 bedroom semi-detached house in Torquay, available with no forward chain.

This property benefits from double glazing and gas central heating throughout, with off road parking available to the rear of the property.

The council tax band is B.

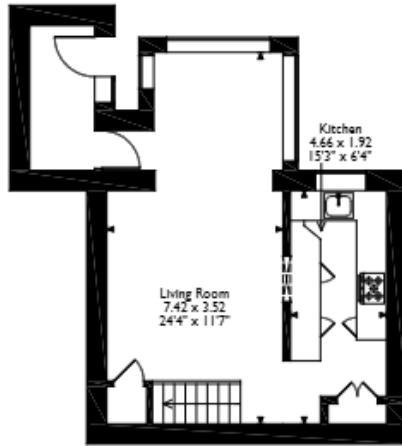
The interior of this well presented property comprises a spacious living room and fitted kitchen on the ground floor. The first floor consists of two bedrooms and a shower room, with the third bedroom and a family bathroom located on the second floor. The exterior boasts a front garden area, perfect for enjoying the summer months.

Located in the popular seaside town of Torquay, the property is close to a range of amenities, including shops, supermarkets, restaurants, pubs and a short distance to the seafront. Excellent transport links can be found from Torquay Railway Station, a variety of local bus routes and close access to the A380.

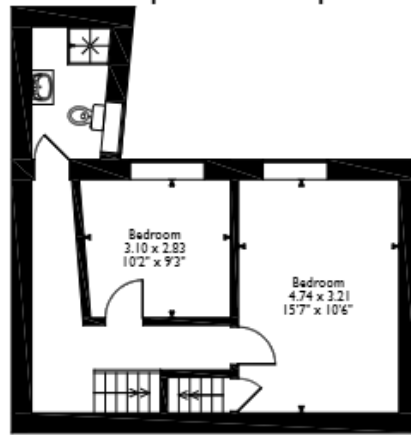
This exciting opportunity should not be missed! All enquiries can be made through Bettermove on 0330 004 0050.



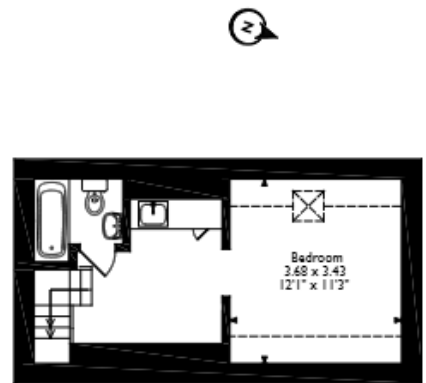
Bethel Terrace, Torquay  
Approximate Gross Internal Area  
98 Sq M/1055 Sq Ft



Ground Floor



First Floor



Second Floor

Please note that the location of doors, windows and other items are approximate and this floorplan is to be used for illustrative purposes only. Unauthorized reproduction is prohibited.





20-22 Bridge End, Leeds, LS1 4DJ  
t: 0330 004 0050 e: [hello@bettermove.co.uk](mailto:hello@bettermove.co.uk)  
[www.bettermove.co.uk](http://www.bettermove.co.uk)