



Flat 1 14 Le Bordage

St Peter Port | Guernsey | GY11DB

This second floor flat is offered to the market in need of upgrading, as the current owner never finished the refurbishment. However, when complete the property would make a great home owing to its convenient town location with shops and restaurants on the door step. Accommodation comprises lounge/diner, kitchen, bedroom and a shower room. There is good on street parking in the area. This is an ideal option for first time buyers who are wanting a project, or anybody looking for a buy-to-let.

£200,000

1 BEDROOM

1 BATHROOM

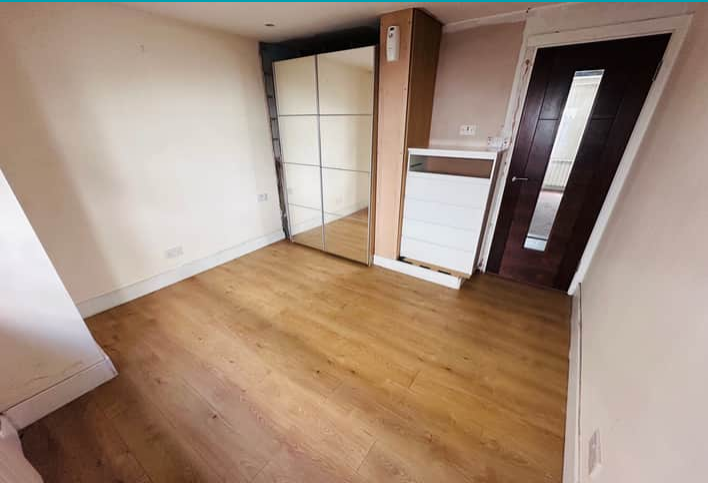
1 RECEPTION

Shields
& Rutland

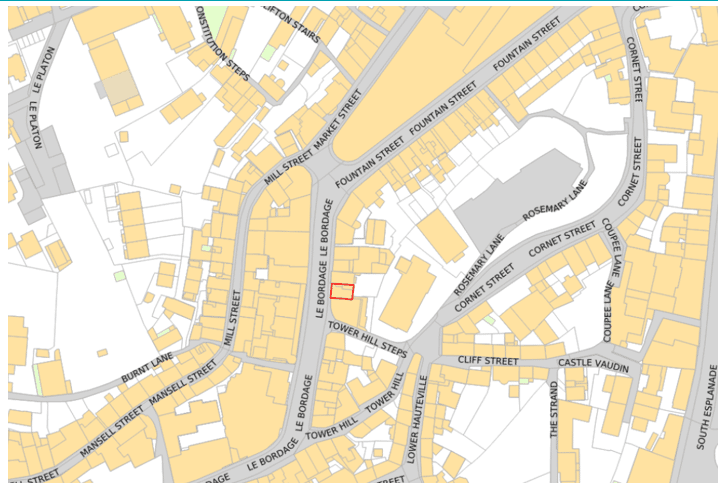
PHOTOS



PHOTOS



SPECIFICATIONS



Entrance Hall

1.38m x 0.87m (4' 6" x 2' 10")

Lounge/Diner

4.28m x 3.88m (14' 1" x 12' 9")

Kitchen

3.81m x 1.73m (12' 6" x 5' 8")

Bedroom

3.49m x 3.45m (11' 5" x 11' 4")

Shower Room

1.51m x 1.39m (4' 11" x 4' 7")

PRICE INCLUDES

Blinds, flooring/carpets and light fittings

SPECIAL FEATURES

- Central town location
- On street parking nearby
- Amenities close by
- uPVC double glazed

SERVICES

Mains water, electricity and drainage.

APPLIANCES INCLUDED

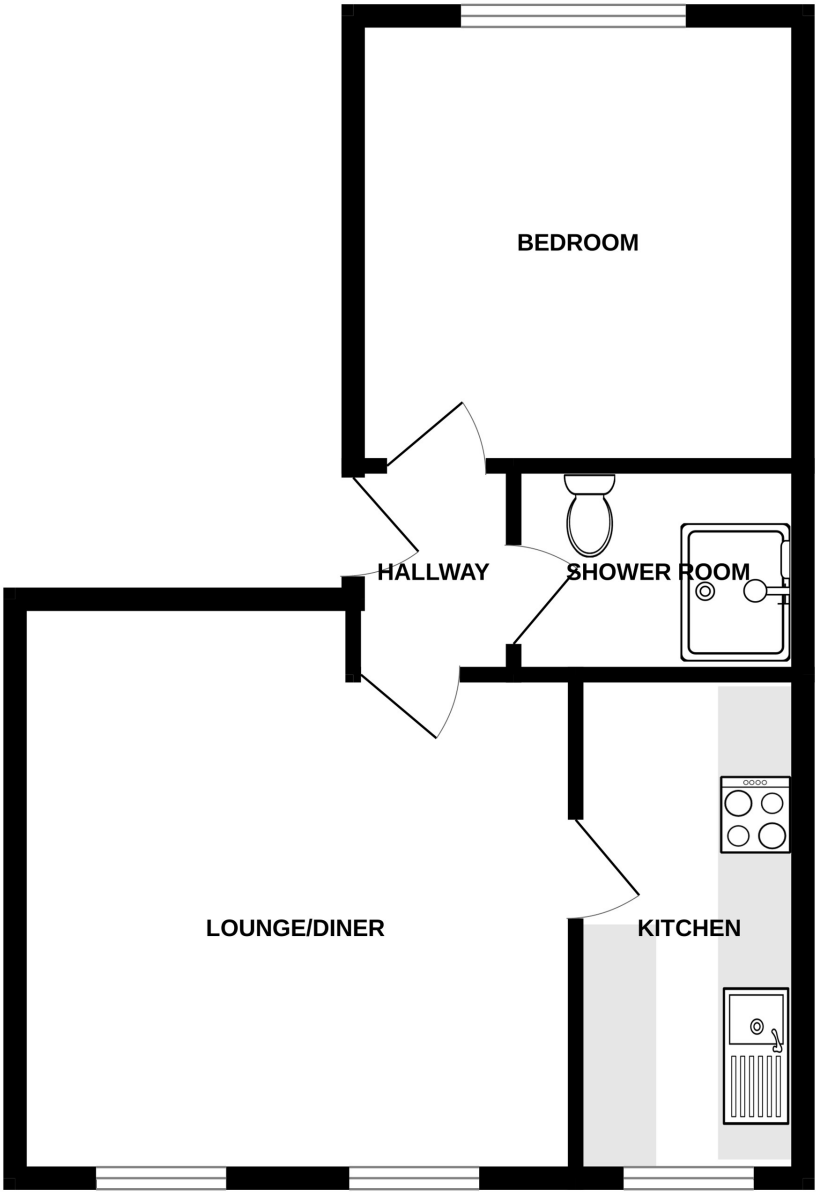
All services/appliances have not, and will not be tested.

- Hotpoint oven
- Four ring hob
- Hotpoint washing machine
- Fridge
- Freezer

SCHOOL CATCHMENT

n/a

FIRST FLOOR



FLAT 1, 14 LE BORDAGE

Whilst every attempt has been made to ensure the accuracy of the floorplan contained here, measurements of doors, windows, rooms and any other items are approximate and no responsibility is taken for any error, omission or mis-statement. This plan is for illustrative purposes only and should be used as such by any prospective purchaser. The services, systems and appliances shown have not been tested and no guarantee as to their operability or efficiency can be given.
Made with Metropix ©2025