

56 Campbell Road

HAWKINGE, Folkestone
CT18 7TL

£500,000 FREEHOLD

FOR SALE WITH BURNAP + ABEL... Set on the sought-after Campbell Road in the desirable village of Hawkinge, this impeccably renovated four-bedroom detached home offers a seamless blend of contemporary elegance, space, and comfort. Finished to an excellent standard by the current vendors, the property presents a rare opportunity to acquire a turnkey residence in a prime Kent location. The ground floor is thoughtfully arranged for modern family living and entertaining. A beautifully appointed lounge provides a welcoming retreat, while the stunning open-plan kitchen and dining room forms the heart of the home, designed with both style and functionality in mind. A separate study offers an ideal home office or quiet reading space, complemented by a sleek ground-floor W.C. Upstairs, the property continues to impress with four generously proportioned bedrooms. The principal and second bedrooms benefit from luxurious en-suite shower rooms, while the remaining bedrooms are served by a contemporary family bathroom, all finished with high-quality fittings and a timeless aesthetic. Externally, the home enjoys off-road parking and a detached garage, providing practicality without compromising on kerb appeal. The overall presentation reflects meticulous attention to detail, making this an outstanding choice for discerning buyers seeking a modern family home.



Entrance Hall

Door to front, wood flooring, stairs to first floor doors leading to,

Lounge

13' 2" x 18' 3" (4.01m x 5.56m)

Kitchen / Diner

14' 8" x 15' 3" (4.47m x 4.65m)

Study

10' 2" x 11' 2" (3.10m x 3.40m)

First Floor Landing

Bedroom One

12' 1" x 10' 5" (3.68m x 3.18m)

En suite

Bedroom Two

9' 5" x 11' (2.87m x 3.35m)

En Suite

Bedroom Three

9' 3" x 9' 10" (2.82m x 3.00m)

Bedroom Four

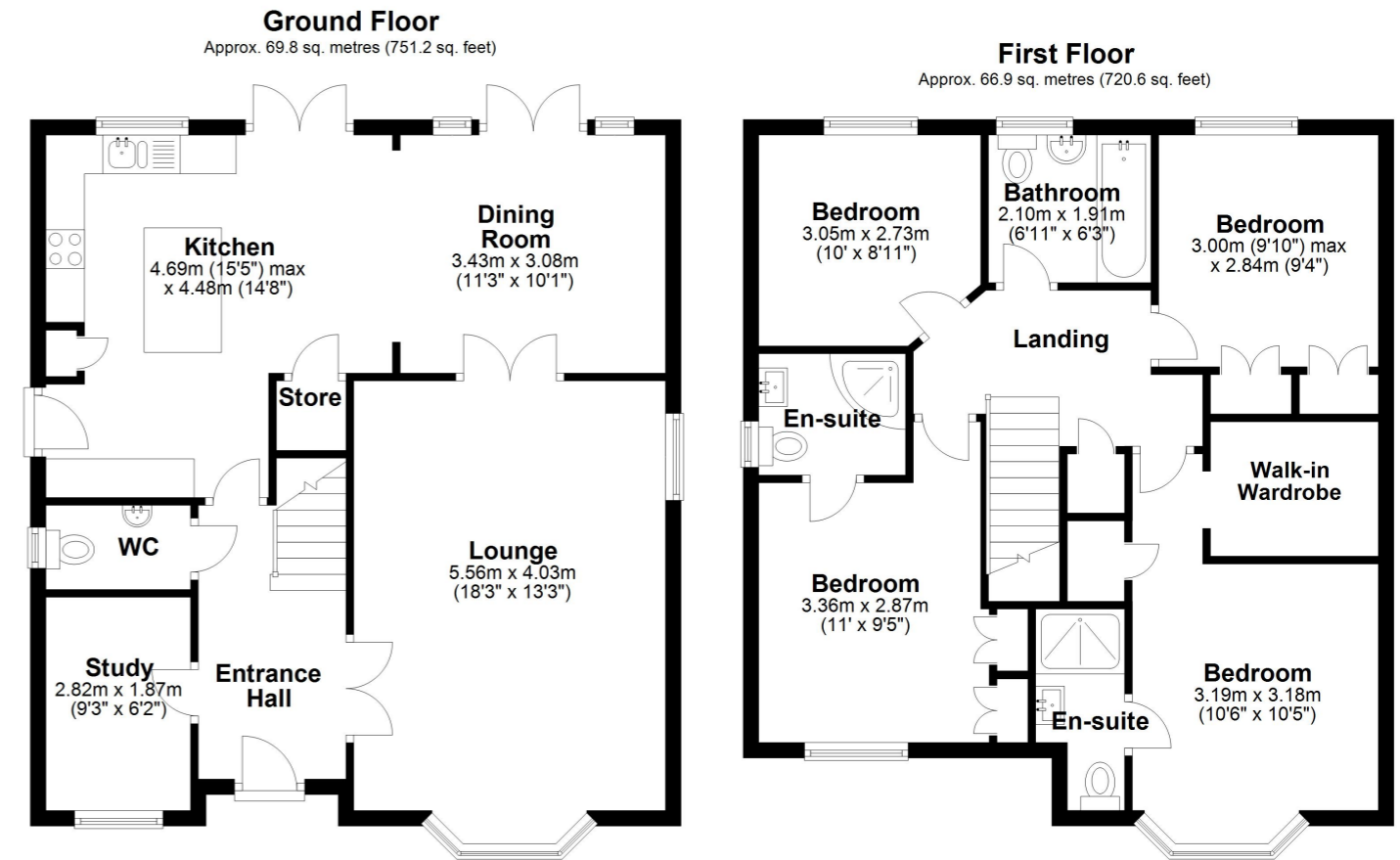
10' x 8' 11" (3.05m x 2.72m)

Family Bathroom

Garden

Garage

Up & over door, power & lighting, pitched roof with loft for storage



Total area: approx. 136.7 sq. metres (1471.8 sq. feet)

