



**13 Jenkins Close, Shenley Church End,  
Milton Keynes, Buckinghamshire, MK5 6HX**

**£410,000 Freehold**

- Three bedroom
- Landscaped Rear Garden
- Single Garage
- Desirable Shenley Church End
- En Suite To Master
- Detached House
- Off road parking for four cars
- Large front and rear gardens
- EPC Rating





## GROUND FLOOR

### Entrance Hall

Doors leading to:

### Kitchen

10' 2" x 14' 1" (3.10m x 4.30m)

### Lounge

9' 2" x 19' (2.80m x 5.80m)

## FIRST FLOOR

### Landing

Doors leading to:

### Bedroom One

10' 2" x 12' 6" (3.10m x 3.80m)

### En Suite To Master

Fitted to comprise three piece suite

### Bedroom Two

8' 10" x 10' 2" (2.70m x 3.10m)

### Bedroom Three

8' 10" x 9' 6" (2.70m x 2.90m)

### Family Bathroom

Fitted to comprise three piece suite

## EXTERIOR

### Rear Garden

### Conservatory

### Single Garage

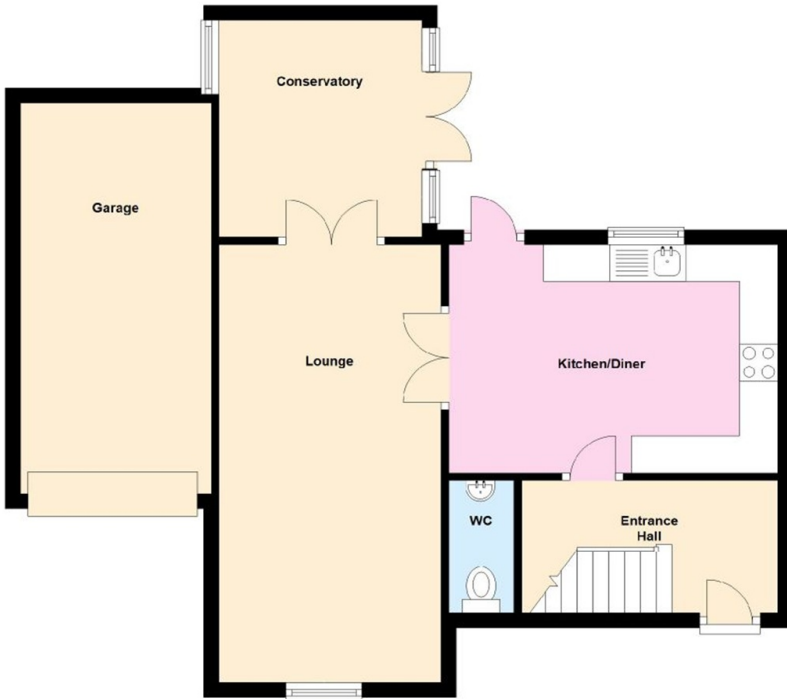
### Driveway

Off Road Parking space for two vehicles

## Disclaimer

Whilst we have endeavoured to prepare our sales particulars accurately none of the services, appliances or equipment have been tested. A buyer should satisfy themselves on such matters prior to purchase. Any measurements or distances mentioned in these particulars are for guide reference only. If such particulars are fundamental to a purchase, buyers should rely on their own enquiries. All enquiries should be directed to Elevation Estate Agents in the first instance.

**Ground Floor**  
Approx. 61.1 sq. metres



**First Floor**  
Approx. 39.2 sq. metres



Total area: approx. 100.3 sq. metres

Floor Plans are for layout purposes only.  
Plan produced using PlanUp.