



*peterrolfe*

## 21 Chalvey Gardens, Slough, SL1 2LW



**£190,000**

Cash Buyers Only! Peter Rolfe our proud to present to the market this spacious first floor maisonette, the property is a blank canvas and in need of modernization throughout so ideal for investors or a family looking for a property to put their stamp on.

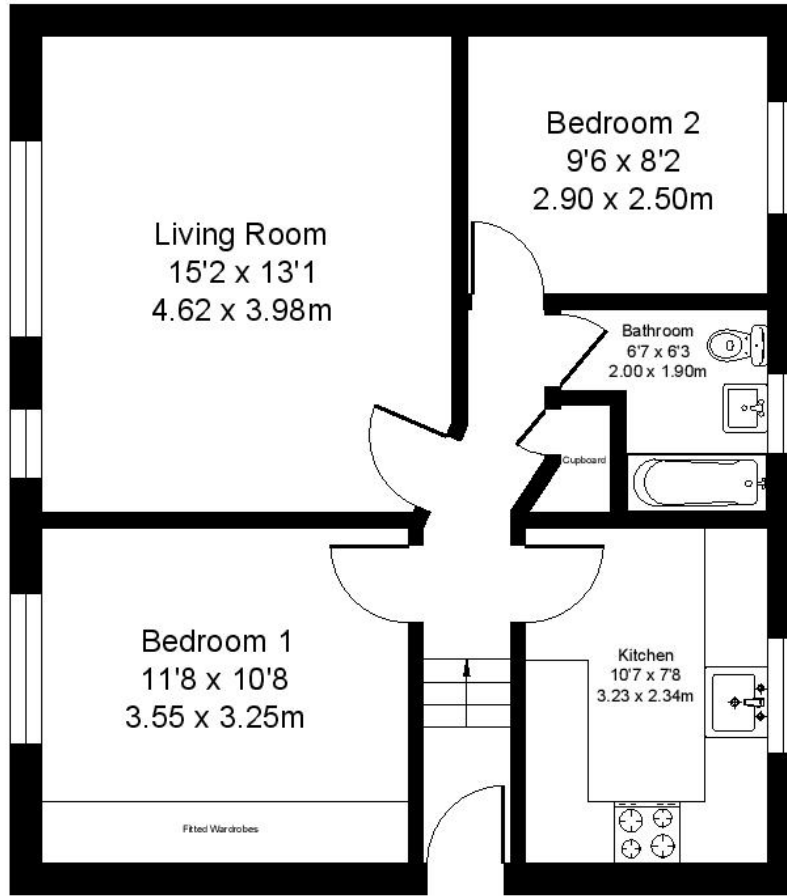
The property boasts a spacious living area with 2 double bedrooms and a low maintenance garden, its situated in an ideal location as its walking distance from the town centre and all the amenities that come with that. We recommend a viewing at your earliest convenience.

- CASH BUYERS ONLY
- LOW LEASE
- Garden
- Spacious Living area
- Double Bedrooms
- Close to shops and amenities
- Parking



Sales | Lettings | Property Management

**Ground Floor**  
**Approx. 56.3 sq meters (606.88 sq feet)**



**Total Area Approx. 56.3 sq meters (606.88 sq feet)**