

Austins Mead, Bovington

£1,400 pcm

Available from the August 2024, a very well presented two double bedroom house located within a short walk of the village High Street. The property benefits from gas central heating, a kitchen/diner with French doors to the rear garden, sitting room, two double bedrooms and a first floor bathroom. There is a private rear garden.

Ground Floor

Storm Porch

Outside light, front door to:

Entrance Hall

Stairs to first floor landing, door leading to:

Sitting Room

4.2m x 4.8m (13' 9" x 15' 9")

Window to front, oak wood laminate flooring, window to front, radiator with fret work cover, Sky TV point, coved ceilings, door way to:

Kitchen diner

2.7m x 4.1m (8' 10" x 13' 5")

French doors to rear garden, area for dining table and chairs, a range of wall and base units in maple

wood effect, black granite effect rolled edged work surfaces, stainless steel bowl sink, free standing electric cooker, fridge/freezer, washing machine, tiled splash backs, window overlooking rear garden.

First Floor

Landing

Window to rear, loft hatch, doors leading to:

Bedroom One

3.0m x 3.3m (9' 10" x 10' 10")

Window overlooking front, built in double cupboard, point for TV, radiator, coved ceiling.

Bedroom Two

3.1m x 2.7m (10' 2" x 8' 10")

Window overlooking rear garden,

radiator, coved ceilings,

Bathroom

A white suite with chrome fittings, fully tiled walls, tiled flooring, panelled bath with shower mixer taps, wash hand basin, close coupled WC, towel radiator, extractor fan. Coved ceiling.

Outside

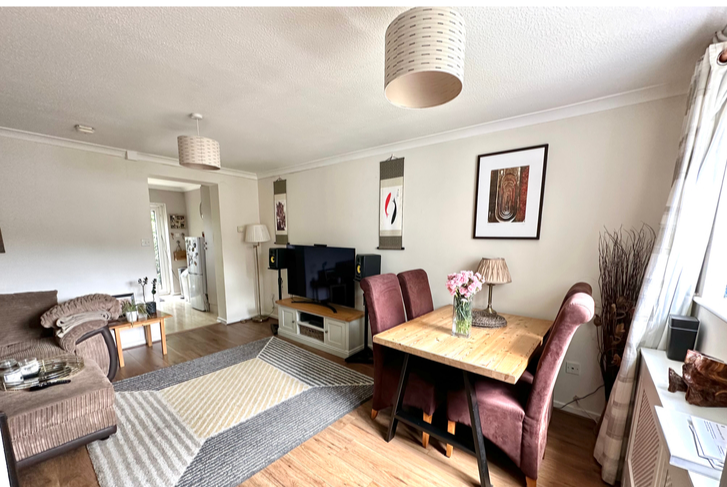
Rear garden

A secluded area laid to gravel, side passageway, mature hedging and timber tool shed.

To the front

Small lawned area, there is off road parking at the end of a row of garage.

www.whitewoodproperties.co.uk



W **W** **WHITEWOOD**
ESTATES
COUNTRY HOMES & VILLAGE PROPERTIES

