



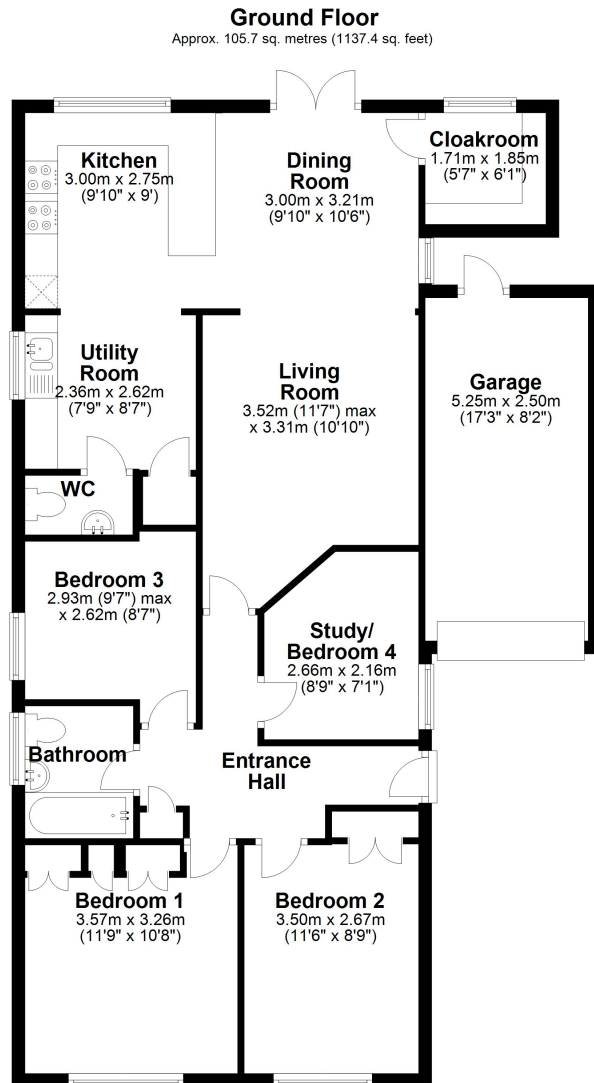
16 Coleford Close, MYTCHETT, Surrey GU16 6DX

PRICE £500,000 Freehold

Jigsaw Estates are pleased to offer this detached bungalow within a quiet cul-de-sac location of Mytchett. In terms of accommodation there are three/four bedrooms and a family bathroom. There is also an open plan living room with skylight which leads onto the kitchen and dining area. There are double doors onto the rear garden and also a large walk-in cupboard which had previously been used as a small study. To the front is the driveway area for three/four vehicles plus the added bonus of a garage. This rarely available bungalow would benefit from some modernisation.



COUNCIL TAX BAND - D



Total area: approx. 105.7 sq. metres (1137.4 sq. feet)

Floorplan is for illustration purposes only. All measurements are approximate and should be verified.
Plan produced using PlanUp.

- DETACHED BUNGALOW
- THREE/FOUR BEDROOMS
- KITCHEN/DINING ROOM
- GARAGE
- PRIVATE REAR GARDEN

- SOME MODERNISATION REQUIRED
- ONE/TWO RECEPTIONS
- FAMILY BATHROOM & CLOAKROOM
- DRIVEWAY FOR SEVERAL VEHICLES
- QUIET CUL-DE-SAC LOCATION

