

LINKS GREEN WAY
COBHAM



Hawksman

20A LINKS GREEN WAY
COBHAM
SURREY
KT11 2QH

5 Bedrooms - 3 ensuite | Principal Suite with
dressing room | 3 Reception Rooms
Lovely open plan kitchen/dining/family room
Large utility room | Presented in excellent
condition | Beautifully landscaped garden
Quiet residential road location
Close to Cobham town centre and rail station
Many excellent schools nearby

HAWKSMAN.COM

01932 505505

COBHAM@HAWKSMAN.COM



STUDY



10'4" X 9'6"



SITTING ROOM



18'4" X 11'1"



KITCHEN/DINING/FAMILY ROOM



29'6" X 21'8"











PRINCIPAL BEDROOM SUITE

11'7" X 10'6"



DRESSING ROOM

11'5" X 9'1"







BEDROOM

15'5" X 11'2"



BEDROOM

10'4" X 8'8"



SECOND FLOOR

21'7" X 14'10"

















20A | Property Group

20A




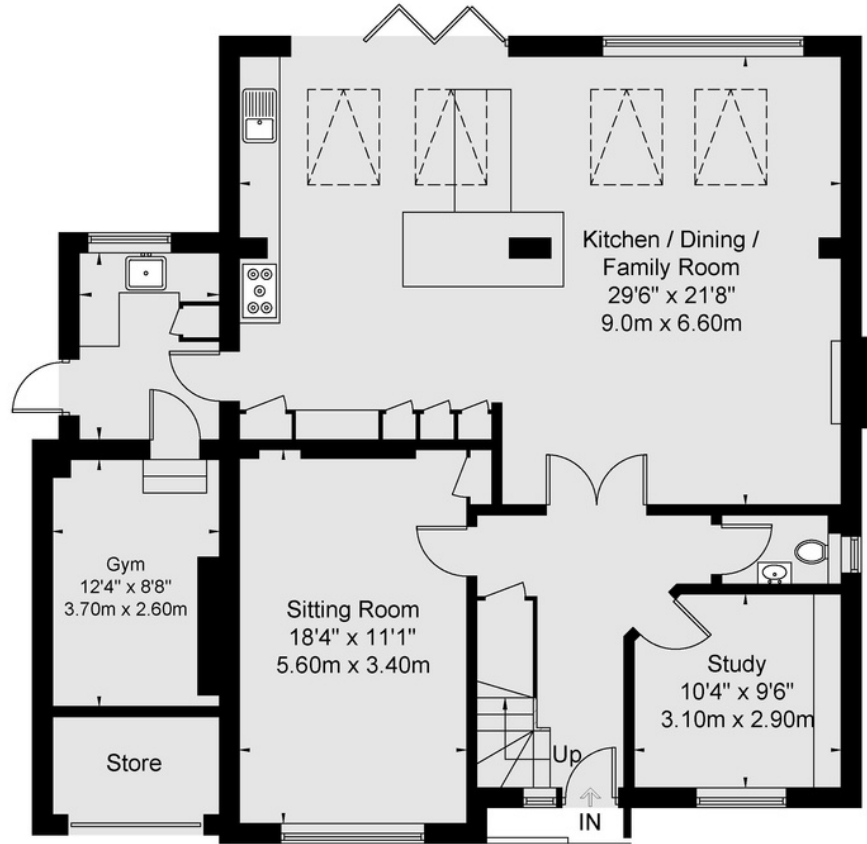
20A

Links Green Way

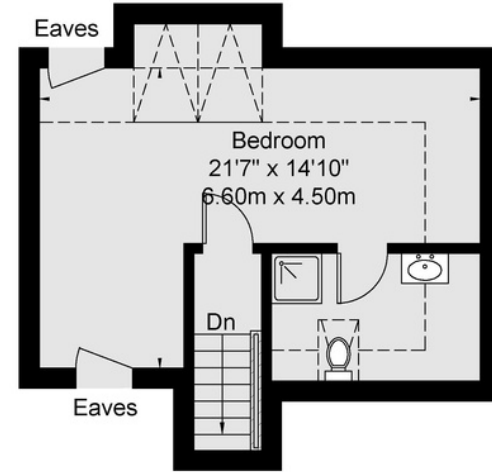
Approx Gross Internal Area = 243.9 Sq m 2625 Sq Ft



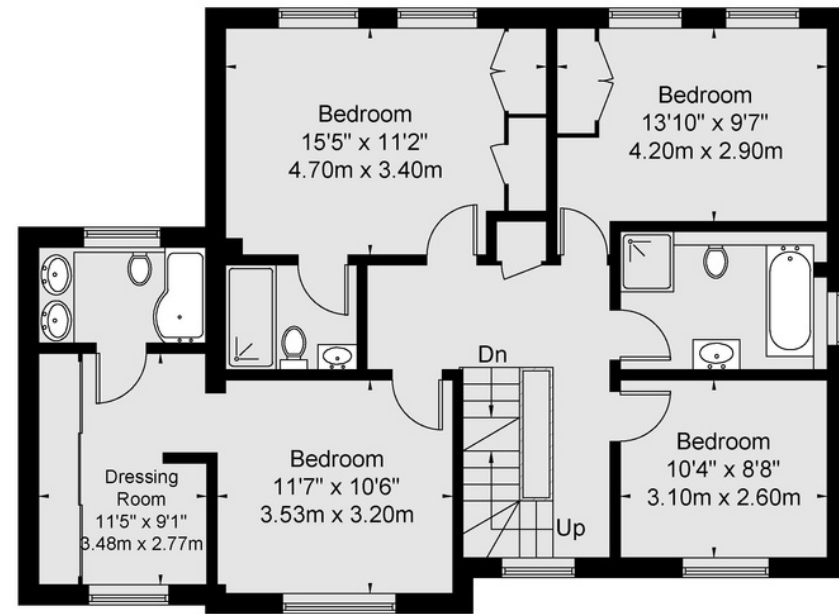
 = Reduced headroom below 1.5m / 5'0"



Ground Floor



Second Floor



First Floor

Viewmedia @ 2023
Viewmedia.co.uk

Whilst every attempt has been made to ensure the accuracy of this floor plan, measurements of doors, windows and rooms are approximate and no responsibility is taken for any error or omission. This illustration is for identification purpose only. Measured and drawn accordance with RICS guidelines. Not drawn to scale, unless stated. Dimensions shown are to the nearest 3" and are to the points indicated by the arrow heads.