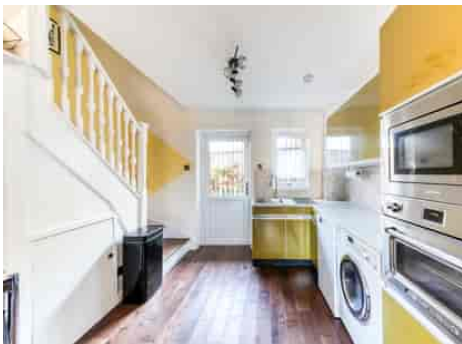


# Truuli



## Bradshaws Close, London, SE25 4EN

£325,000 Freehold

- Allocated off street parking
- One bedroom starter home
- Freehold
- Easy access of Norwood Junction mainline station
- Private courtyard garden
- Good sized accomodation

Southbridge Place, Surrey, CR0 4HA

Tel: 0330 043 0002

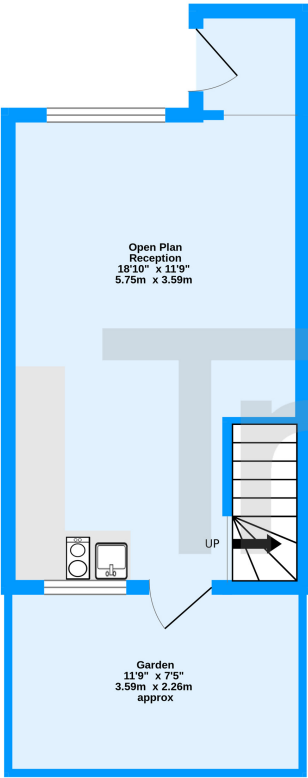
Email: [save@truuli.co.uk](mailto:save@truuli.co.uk) Web: [www.truuli.co.uk](http://www.truuli.co.uk)

# Bradshaws Close, London, SE25 4EN

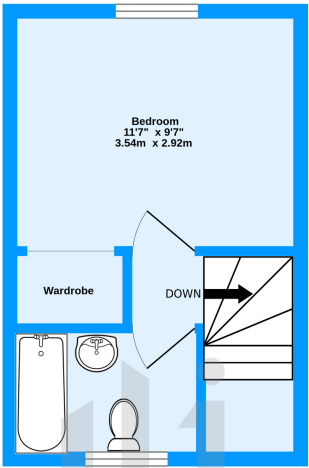
£325,000 Freehold

Welcome to this delightful one-bedroom freehold terraced house nestled in the peaceful community of Bradshaws Close, Upper Norwood. This charming property is perfect for first-time buyers, downsizers, or those seeking a low-maintenance home.

Ground Floor  
239 sq.ft. (22.2 sq.m.) approx.



1st Floor  
208 sq.ft. (19.3 sq.m.) approx.



Bradshaw Close, London, SE25  
TOTAL FLOOR AREA : 447 sq.ft. (41.6 sq.m.) approx.  
Measurements are approximate. Not to scale. Illustrative purposes only  
Made with Metropix ©2024

Energy Efficiency Rating		
	Current	Potential
Very energy efficient - lower running costs		
(92+)	38	94
A		
(81-91)		
B		
(69-80)		
C		
(55-68)		
D		
(39-54)		
E		
(21-38)		
F		
(1-20)		
G		
Not energy efficient - higher running costs		
England, Scotland & Wales		
EU Directive 2002/91/EC		

