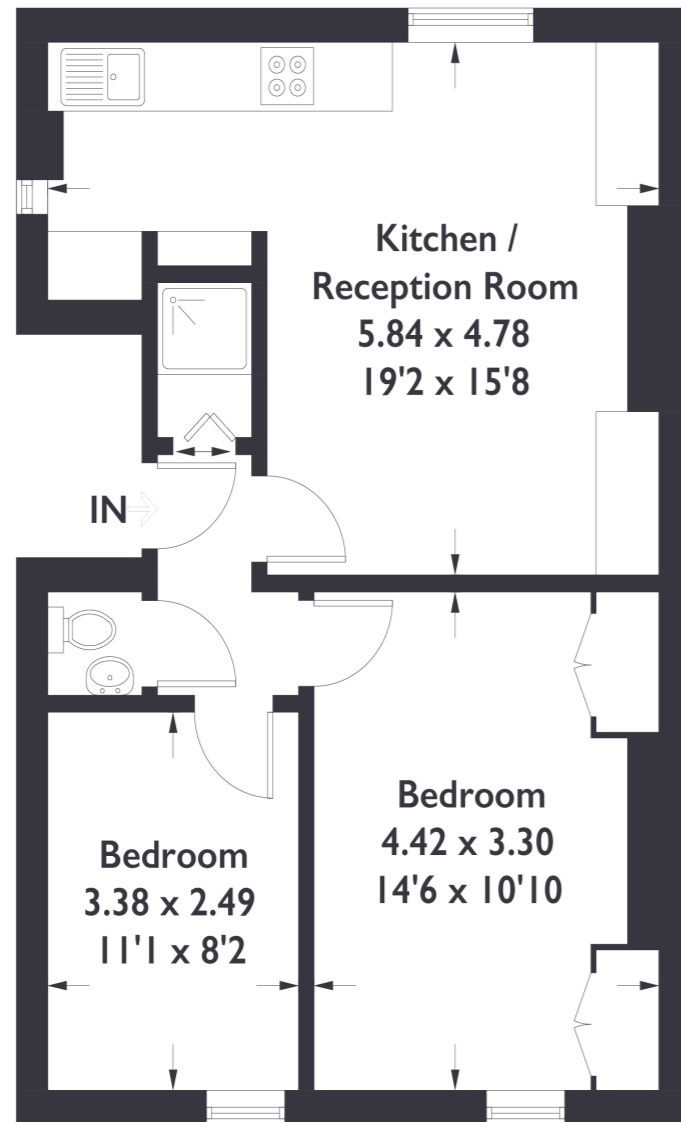


The Grove, W5

Approximate Gross Internal Area = 52.4 sq m / 565 sq ft



Second Floor

Measured in accordance with RICS Code of Measuring Practice. To be used for identification and guidance purposes only. Whilst every care is taken in the preparation of this plan, please check all dimensions, shapes and compass bearings before making any decisions reliant upon them.



2 BEDROOM FLAT

The Grove, W5
£459,950

This two double bedroom top floor flat is in the heart of Ealing Broadway.

With an open plan living, dining room and kitchen, it's the perfect first time buy. Offered to the market chain free, and located in a prime position in a desirable residential area. Ealing Broadway itself is known for its vibrant atmosphere, boasting an array of shops, cafes, restaurants, and entertainment options, ensuring you'll have everything you need at your doorstep. The area is well-connected, with excellent transport links, including Ealing Broadway Station, which provides easy access to central London and other parts of the city.

FEATURES

- Top Floor Flat
- Period Conversion
- Two Double Bedrooms
- Moments from Ealing Broadway Station
- Open Plan Reception/ Dining Room and Kitchen
- Chain Free



2 BEDROOM FLAT
The Grove, W5
£459,950

