

rodgers  
estate agents



**Rickmansworth Lane**  
Chalfont St Peter, Buckinghamshire, SL9 0NA



**£1,450 pcm**

Situated on the outskirts of the village, a totally refurbished mid terraced cottage, within easy reach of the village centre with all its amenities and excellent schools. In show house condition throughout, an internal inspection is highly recommended. The accommodation on the ground floor comprises of an entrance lobby and open plan lounge/kitchen dining area. On the first floor is a landing, two double bedrooms and a modern fitted bathroom. Features include gas central heating and double glazing. AVAILABLE IMMEDIATELY, UNFURNISHED.

#### **Entrance Lobby**

UPVC front door with opaque double glazed glass insets. Radiator. Stairs leading to first floor and landing. Door to:

#### **Reception Room/Kitchen**

24' 11" x 19' 6" (7.59m x 5.94m) An open plan, double aspect room with double glazed windows overlooking front and rear aspects. Quality wood tile flooring. High gloss fitted kitchen with wall and base units. Granite effect work surface with tiled splash back. Stainless steel sink unit with mixer tap and drainer. Built in four ring electric hob with extractor hood over. Fitted oven. Washing machine and dishwasher. Integrated fridge/freezer. Cupboard housing wall mounted gas central heating boiler. Two radiators. Downlighters. Under stairs cupboard with light. Casement door with double glazed clear glass inset leading to rear.

#### **First Floor**

##### **Landing**

Quality wood tile flooring. Radiator. Double glazed window overlooking rear aspect.

##### **Bedroom 1**

17' 0" x 11' 5" (5.18m x 3.48m) Quality wood tile flooring. Access to loft. Radiator. Double glazed window overlooking front aspect.

## Bedroom 2

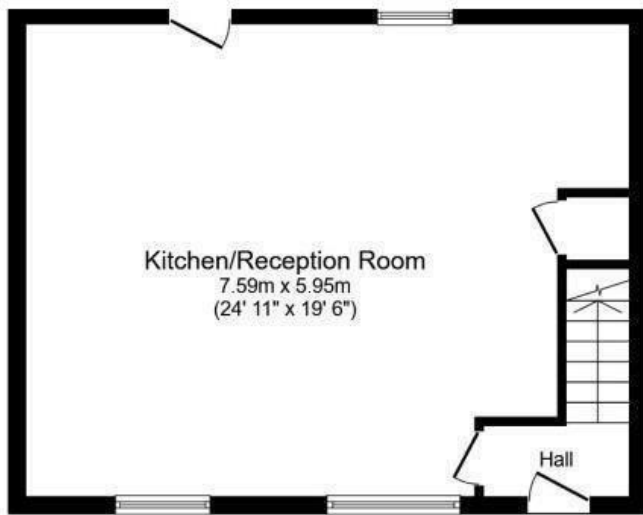
16' 3" x 13' 4" (4.95m x 4.06m) "L" shaped with quality wood tile flooring. Radiator. Double glazed window overlooking front aspect.

## Bathroom

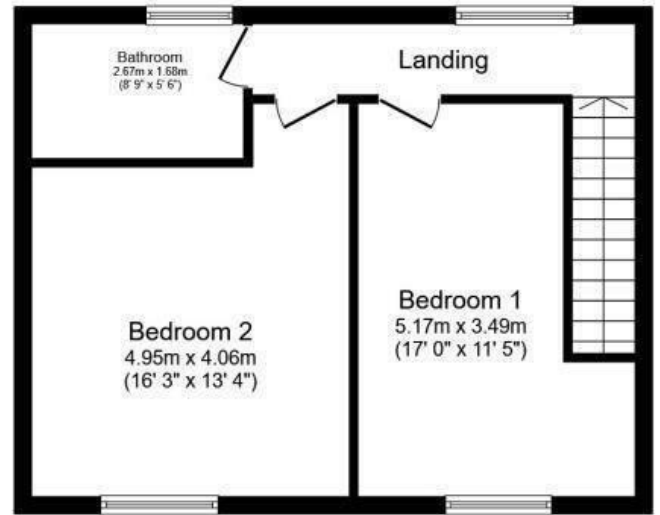
8' 9" x 5' 6" (2.67m x 1.68m) Fully tiled with a modern white suite incorporating bath, WC, and wash hand basin with cupboard under, and walk in shower. Downlighters. Expel air. Heated chrome towel rail. Opaque double glazed window overlooking rear aspect.



## Rickmansworth Lane



**Ground Floor**



**First Floor**

Total floor area 90.3 m<sup>2</sup> (972 sq.ft.) approx

This floor plan is for illustrative purposes only. It is not drawn to scale. Any measurements, floor areas (including any total floor area), openings and orientation are approximate. No details are guaranteed, they cannot be relied upon for any purpose and they do not form part of any agreement. No liability is taken for any error, omission or misstatement. A party must rely upon its own inspection(s).

Important Notice: Rodgers Estate Agents give notice that their solicitors and any joint agents give notice that:

1. They are not authorised to make or give any representations or warranties in relation to the property either here or elsewhere, either on their own behalf or on behalf of their client or otherwise. They assume no responsibility for any statement that may be made in these particulars. These particulars do not form any part of any offer or contract and must not be relied upon as statements or representation of fact.

2. Any areas, measurements or distances are approximate. The text, photographs and plans are for guidance only and are not necessarily comprehensive. It should not be assumed that the property has all necessary planning, building regulation or other consents and Rodgers Estate Agents have not tested any appliances, equipment or facilities. Purchasers must satisfy themselves by inspection or otherwise.

Energy Efficiency Rating		Current	Potential
Very energy efficient - lower running costs			
(92+)	<b>A</b>		
(81-91)	<b>B</b>		
(69-80)	<b>C</b>		
(55-68)	<b>D</b>		
(39-54)	<b>E</b>	40	54
(21-38)	<b>F</b>		
(1-20)	<b>G</b>		
Not energy efficient - higher running costs			
England, Scotland & Wales		EU Directive 2002/91/EC	

30 Market Place  
Chalfont St Peter  
Buckinghamshire  
SL9 9DU

5 Park Lane  
Harefield  
Middlesex  
UB9 6BJ

csp@rodgersstates.com

harefield@rodgersstates.com

For further information or an appointment to view please call: Harefield 01895 823333 Market Place 01753 880333