



Saxon Court

Queen Street | Hitchin | Hertfordshire | SG4 9TB

www.stonegate-estates.co.uk



SAXON COURT

Property Description

Situated in a sought-after retirement development close to Hitchin town centre, this beautifully presented two bedroom upper ground floor apartment offers comfortable, low-maintenance living for the over 55's.

The property is in good decorative order throughout and benefits from a spacious living room with views over looking the church and town centre, a fitted kitchen, two double bedrooms, one with built-in wardrobes, and a stylish bathroom with shower.

Residents enjoy a welcoming community atmosphere, with access to a communal lounge, laundry facilities, guest suite, and on-site manager for peace of mind. Emergency pull cords are fitted throughout the apartment for added security.

Conveniently located within walking distance of local shops, cafes, public transport, and all the amenities of Hitchin's historic town centre, this delightful home offers independent living with support when needed.

Key Features:

Upper Ground floor with views over town centre

Good condition throughout

Double bedrooms, one with fitted wardrobe

Fitted kitchen

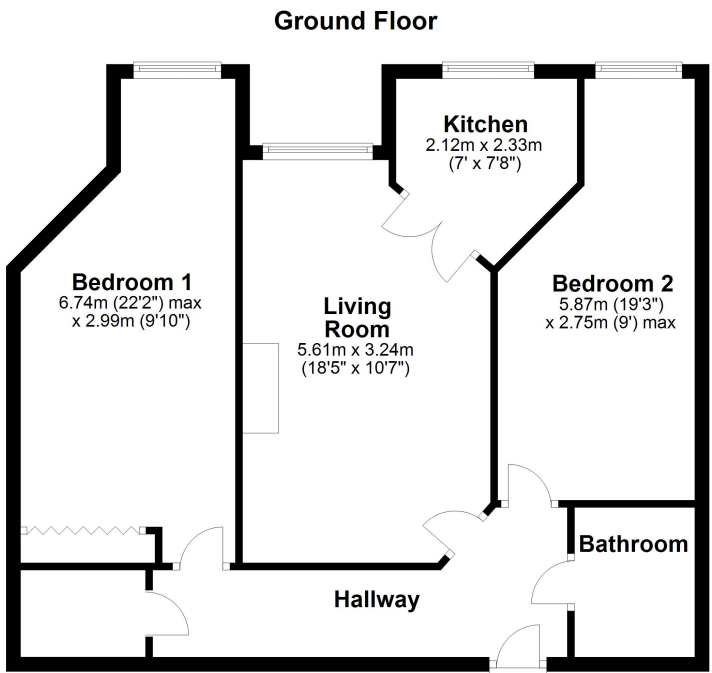
Communal facilities & on-site manager

Resident parking available

This apartment is ideal for anyone looking to downsize or enjoy a peaceful retirement lifestyle in a vibrant Hertfordshire town.

£245,000 Leasehold





All measurements shown are approximate and for guidance only. Garages and workshops are not included in any gross floor areas unless integral to the main building where they will be included.
Plan produced using PlanUp.

Saxon Court, Hitchin



- POPULAR RETIREMENT DEVELOPMENT
- TWO BED UPPER GROUND FLOOR
- 24 HOUR CARELINE SYSTEM
- TOWN CENTRE LOCATION
- COMMUNAL GARDENS
- COMMUNAL LOUNGE
- DEVELOPMENT MANAGER ON SITE

EPC Rating: B

Stonegate Estate Agents

01462 438979

sales@stonegate-estates.co.uk | www.stonegate-estates.co.uk

