



LEATHERHEAD ROAD



Hawksman

WHITEGATES
LEATHERHEAD ROAD
OXSHOTT
SURREY
KT22 0ET

Detached Family Home | 6 Bedrooms - 3 En
suite | 3 Reception Rooms | 4 Bathrooms
175ft South West Rear Garden | Woodland
Views | Garage and Parking | In & Out
Driveway | No Onward Chain
Oxshott Village

HAWKSMAN.COM
01372 237800
OXSHOTT@HAWKSMAN.COM







SITTING ROOM



25'6" X 19'2"



KITCHEN/DINING/FAMILY ROOM



19'3" X 16'0"







PRINCIPAL BEDROOM SUITE

19'4" X 10'7"





BEDROOM

11'9" X 10'4"



BEDROOM

16'6" X 11'9"



BEDROOM

15'11" X 11'9"












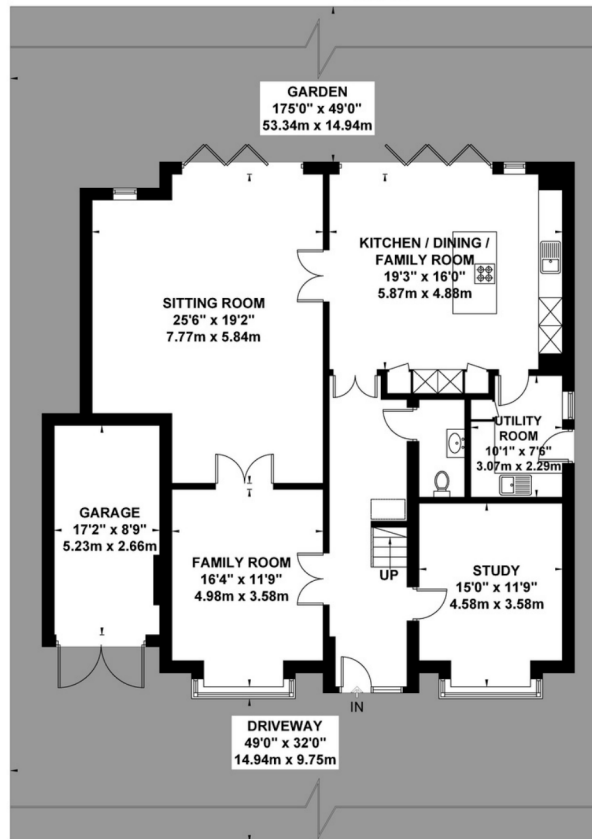


Leatherhead Road

Approximate Gross Internal Area
 Ground Floor = 134.0 sq m / 1442 sq ft
 First Floor = 123.5 sq m / 1329 sq ft
 Second Floor = 61.8 sq m / 665 sq ft
 Garage = 13.9 sq m / 149 sq ft
 Total = 333.2 sq m / 3585 sq ft

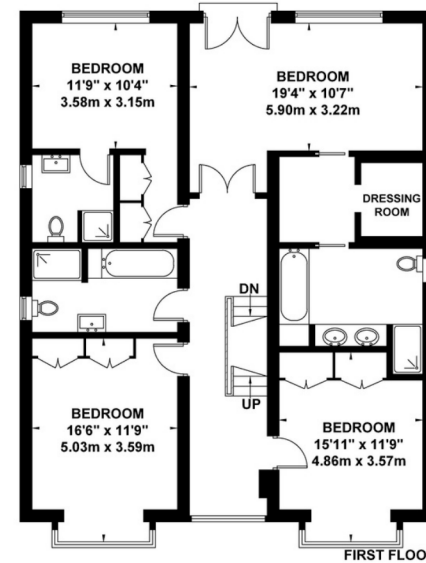
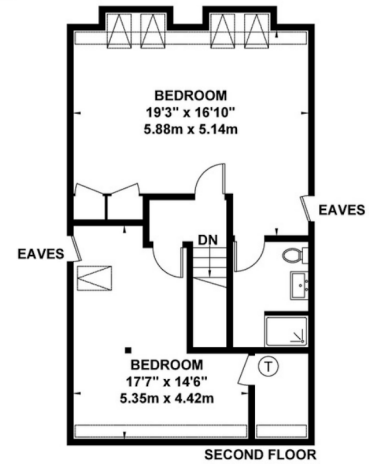


 = Reduced headroom below 1.5m / 5'0"



GROUND FLOOR

Viewmedia @ 2019
 Viewmedia.co.uk



Whilst every attempt has been made to ensure the accuracy of this floor plan, measurements of doors, windows and rooms are approximate and no responsibility is taken for any error or omission. This illustration is for identification purpose only. Measured and drawn accordance with RICS guidelines. Not drawn to scale, unless stated. Dimensions shown are to the nearest 3" and are to the points indicated by the arrow heads.