



The top photograph shows a bright, empty living room with white walls and a light-colored wooden floor. A large window on the left side offers a view of a garden with greenery and a blue sky. A white radiator is positioned below the window. A small, square, light-colored pendant light hangs from the ceiling. The bottom photograph shows a kitchen area with light blue cabinets and a white countertop. A black oven is integrated into the lower cabinets. A white sink with a chrome faucet is on the right. The floor is covered in square tiles with a mix of beige and brown tones. A white door is visible on the left, and a white wall-mounted unit is on the right.

<https://www.burnapandabel.co>

Lounge

15' 0" x 10' 11" (4.57m x 3.33m)

Kitchen/Dining Room

15' 0" x 13' 6" (4.57m x 4.11m)

Bedroom One

15' 0" x 10' 11" (4.57m x 3.33m)

Bedroom Two

10' 4" x 8' 7" (3.15m x 2.62m)

Bedroom Three

10' 4" x 6' 0" (3.15m x 1.83m)

Bathroom

5' 10" x 5' 5" (1.78m x 1.65m)

Garden

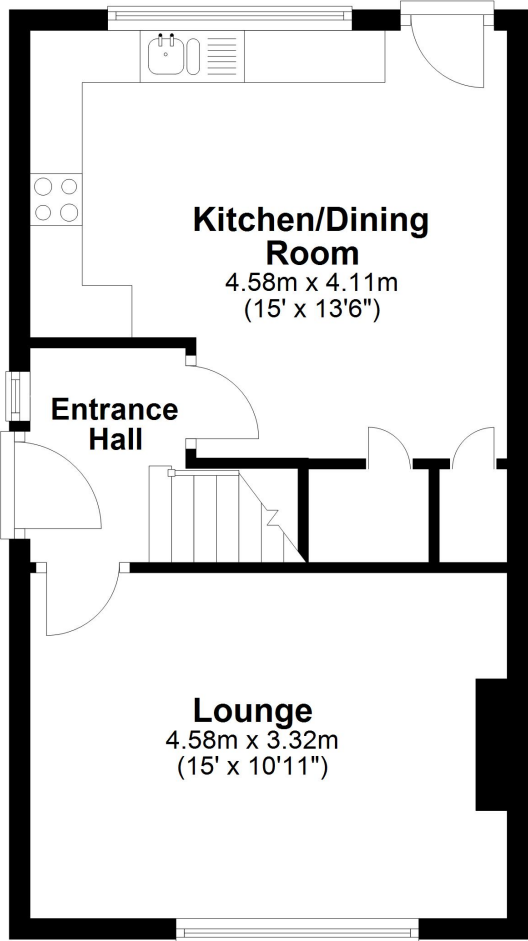
Garage & Off Street Parking

Area Information

Eythorne is a small rural village which is 7 miles from Dover connecting you to the port and 13 miles from the cultural city of Canterbury with great access to the A2, M2 and M20. Eythorne is neighboured by Coldred which has 'Kent's best kept village' status and Shepherdswell which has the nearest main line train station connecting through Canterbury to pick up the high-speed service to London St Pancras or has direct routes to London Victoria. Eythorne has a village convenience store with post office which has a good selection of produce, The Crown Inn pub which serves food, Eythorne Elvington Community Primary School and two churches. For families there is a park around the corner for the children to go and play, great woodland walks in and around the village as well as a vintage railway station. The historical town of Sandwich is only 7 miles away and has a cinque port, pubs & restaurants, secondary and grammar schools, boutique shops and has a train station.

Ground Floor

Approx. 39.1 sq. metres (420.5 sq. feet)



First Floor

Approx. 38.7 sq. metres (416.1 sq. feet)

