

# FOR SALE

Waldeck Road,  
Chiswick, W4

Terraced House  
Chiswick

£950,000 fh

3  2  1 



**horton  
andgarton**

SALES / LETTINGS / PROPERTY MANAGEMENT

hortonandgarton.co.uk | Sales 020 3989 6464 | Lettings 020 3989 5454  
161 Chiswick High Road, London, W4 2DT



# FOR SALE

---

Waldeck Road,  
Chiswick, W4

---

Terraced House  
Chiswick

---

£950,000 fh

---

3  2  1 



**horton  
andgarton**

SALES / LETTINGS / PROPERTY MANAGEMENT

hortonandgarton.co.uk | Sales 020 3989 6464 | Lettings 020 3989 5454  
161 Chiswick High Road, London, W4 2DT



# FOR SALE

Waldeck Road,  
Chiswick, W4

Terraced House  
Chiswick

£950,000 fh

3  2  1 

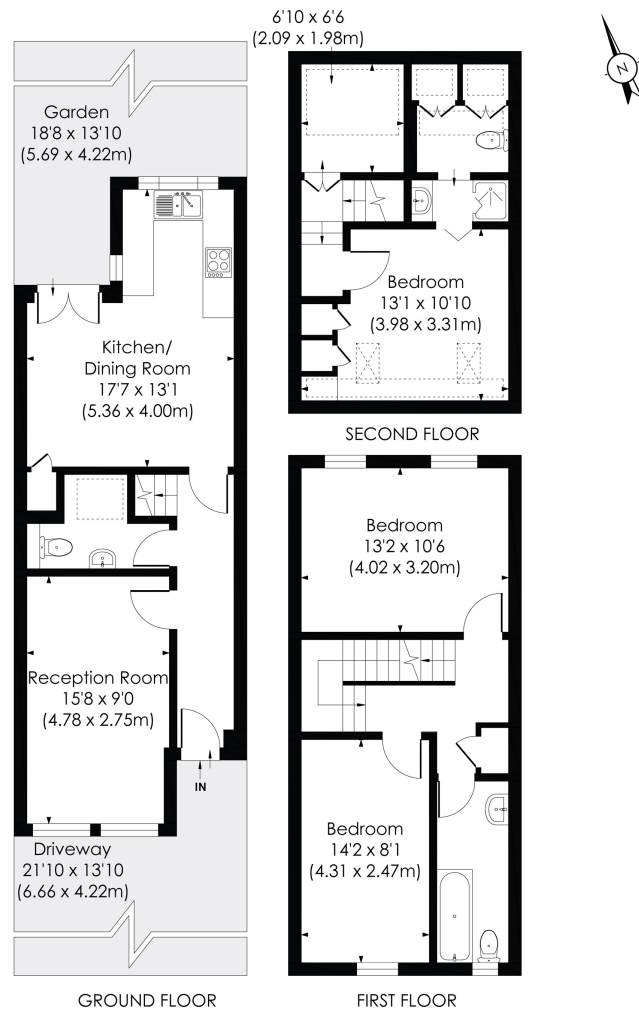


**horton  
andgarton**

SALES / LETTINGS / PROPERTY MANAGEMENT

hortonandgarton.co.uk | Sales 020 3989 6464 | Lettings 020 3989 5454  
161 Chiswick High Road, London, W4 2DT





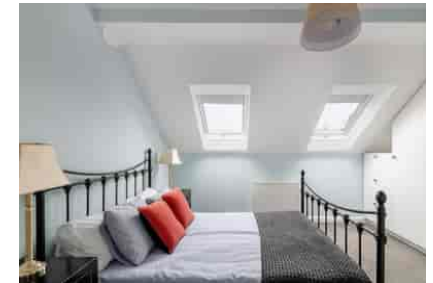
### WALDECK ROAD, W4

Approx. Gross Internal Floor Area  
**1173 Sq'/109.02 SqM** (Including RHH)  
**1074 Sq'/99.54 SqM** (Excluding RHH)

© Pixangle Property Marketing Ltd. info@pixangle.com Tel: 0208 870 2118

**horton  
andgarton**

This floor plan has been prepared for the purpose of illustration only in accordance with the latest RICS code of measuring practice and is not to scale. All measurements and areas are approximate and whilst every effort has been made to ensure the accuracy of the plan contained here, no responsibility is taken for any error, omission or misstatement.



Freehold Family Home | Three bedrooms - Two  
bathrooms | Potential to extend - Loft and "pod" STPP |  
EPC rating C | Off street parking | Strand on the Green



hortonandgarton.co.uk  
Sales 020 3989 6464  
Lettings 020 3989 5454

161 Chiswick High Road, London, W4 2DT