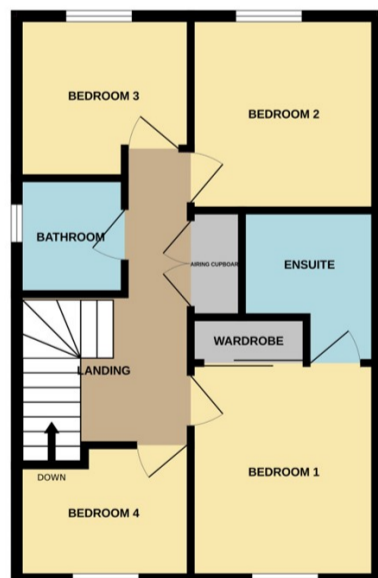
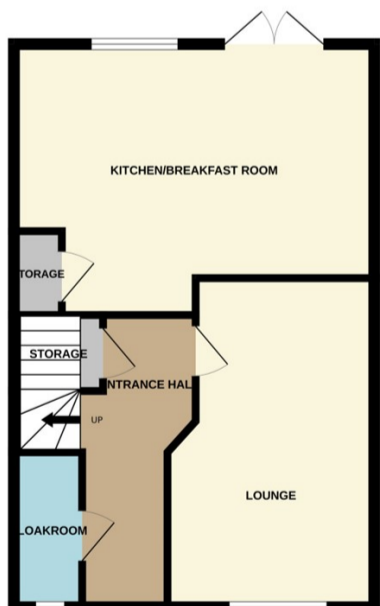




Bourne, Lincs

£285,000



IMMACULATELY PRESENTED DETACHED HOME Rosedale are pleased to offer to the market this lovely modern house on a private road overlooking a green area, within the popular modern development of Elsea park. This four bedroom house has an ensuite to the main bedroom, family bathroom, spacious kitchen breakfast, lounge and cloakroom. The Southerly facing rear garden has also been very well maintained with gated access to the single garage and driveway. The property is ready to move straight into, so don't delay, book your viewing appointment today to fully appreciate this property. EPC Energy Rating B/ Council Tax Band C