

FOR SALE

£599,950

Rhyl Road, Perivale, Greenford, Greater London, UB6



Peter Gamble & Co offer to the market this 3 BEDROOM, 2 BATHROOM HOME.

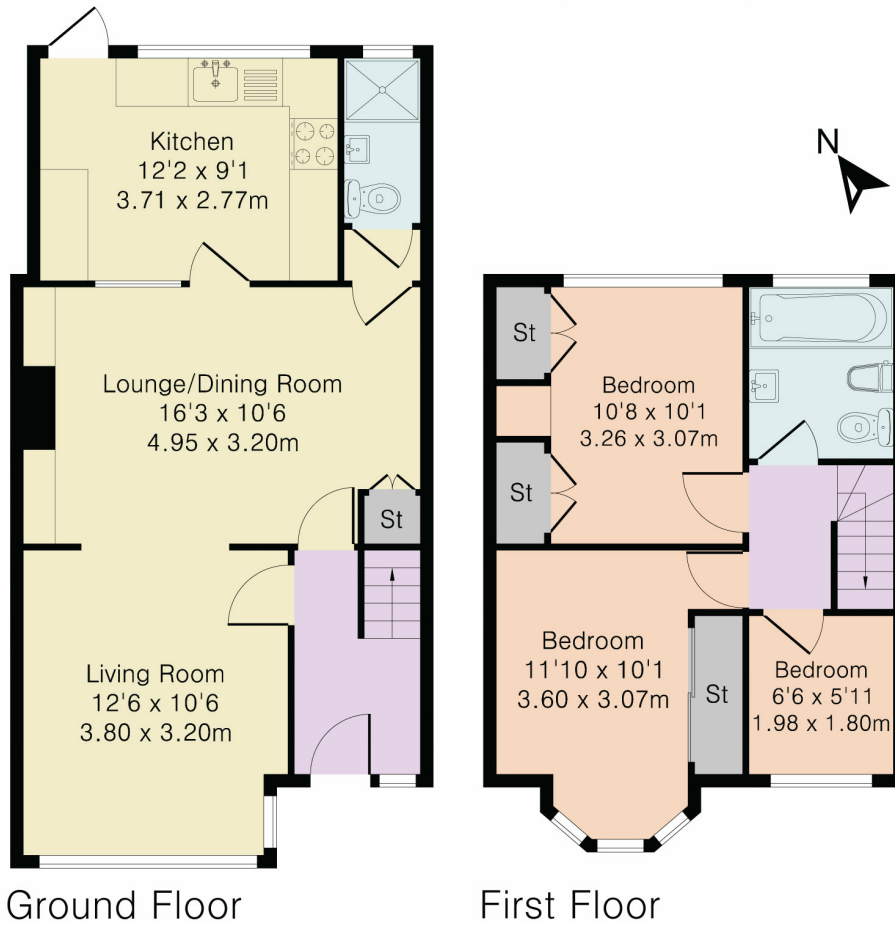
Situated on this quiet residential street in the ever popular Medway Village this well presented and extended three bedroom, two bathroom home is brought to the market for chain free sale and offers flexible living arrangement as well as good future potential for loft conversion.

To the ground floor, the property comprises a large through lounge, ground floor shower and WC and extended kitchen diner leading to the bright rear garden with garage and rear access. To the first floor are the three bedrooms and Family bathroom.





Approximate Gross Internal Area 837 sq ft – 78 sq m  
 Ground Floor Area 501 sq ft – 47 sq m  
 First Floor Area 336 sq ft – 31 sq m



Although Pink Plan Ltd ensures the highest level of accuracy, measurements of doors, windows and rooms are approximate and no responsibility is taken for error, omission or misstatement. These plans are for representation purposes only as defined by RICS code of measuring practise. No guarantee is given on total square footage of the property within this plan. The figure icon is for initial guidance only and should not be relied on as a basis of valuation.



Energy Efficiency Rating		Current	Potential
Very energy efficient - lower running costs			
(92+)	<b>A</b>		<b>90</b>
(81-91)	<b>B</b>		
(69-80)	<b>C</b>		
(55-68)	<b>D</b>	<b>64</b>	
(39-54)	<b>E</b>		
(21-38)	<b>F</b>		
(1-20)	<b>G</b>		
Not energy efficient - higher running costs			
<b>England, Scotland &amp; Wales</b>		EU Directive 2002/91/EC	