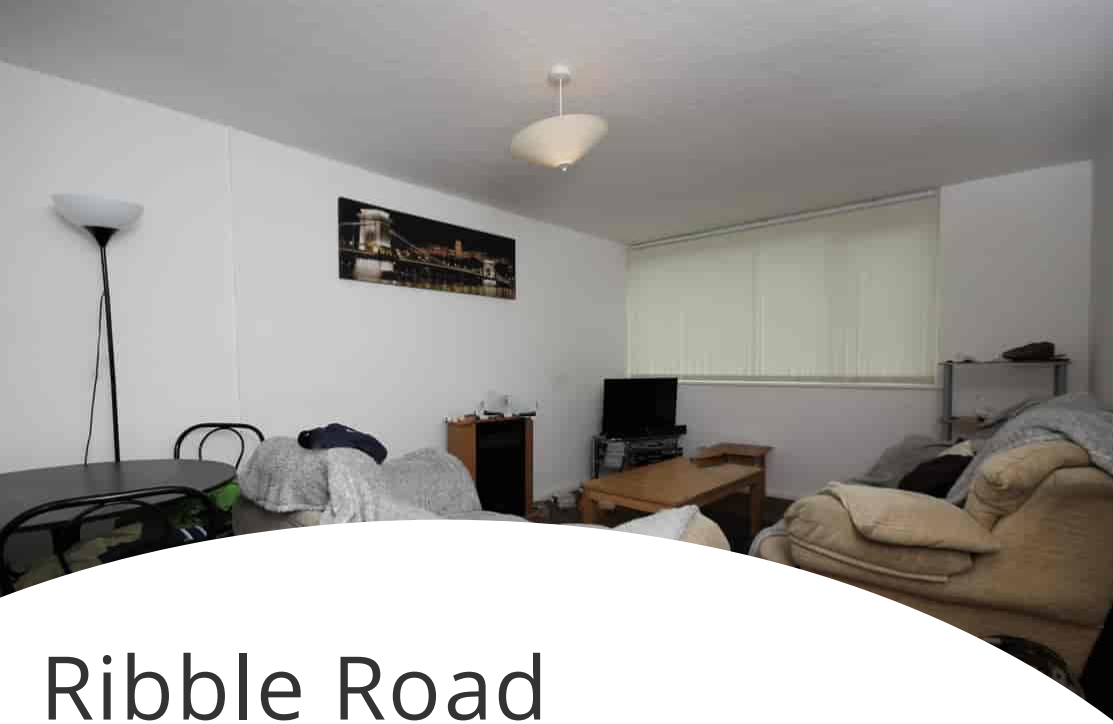




22 Ribble Road
Liverpool, L25 5PN



0151 424 5100
info@mylerestates.com



Ribble Road

Liverpool, L25 5PN

£80,000

Offered to market ONE BEDROOM FIRST FLOOR APARTMENT, benefitting from electric heating, UPVC double glazing, located CLOSE TO LOCAL AMENITIES, ROAD AND RAILWAY LINKS, PARK, WALKING DISTANCE TO LOCAL SHOPS. Early viewings HIGHLY RECOMMENDED.





Entrance Hall

Laminate to flooring, ceiling light, two storage cupboards, doors leading to lounge, bedroom and bathroom.

Lounge

5.00m x 3.25m (16' 5" x 10' 8")

Carpet to flooring, ceiling light, electric wall heater, UPVC double glazed window, door leading to kitchen.

Kitchen

3.93m x 1.50m (12' 11" x 4' 11")

Laminate to flooring, two ceiling lights, eclectic wall heater, UPVC double glazed window, wall with basic extractor fan, stainless steel sink with hand wash mixer tap, electric cooker, space for fridge freezer and a washer.

Bedroom

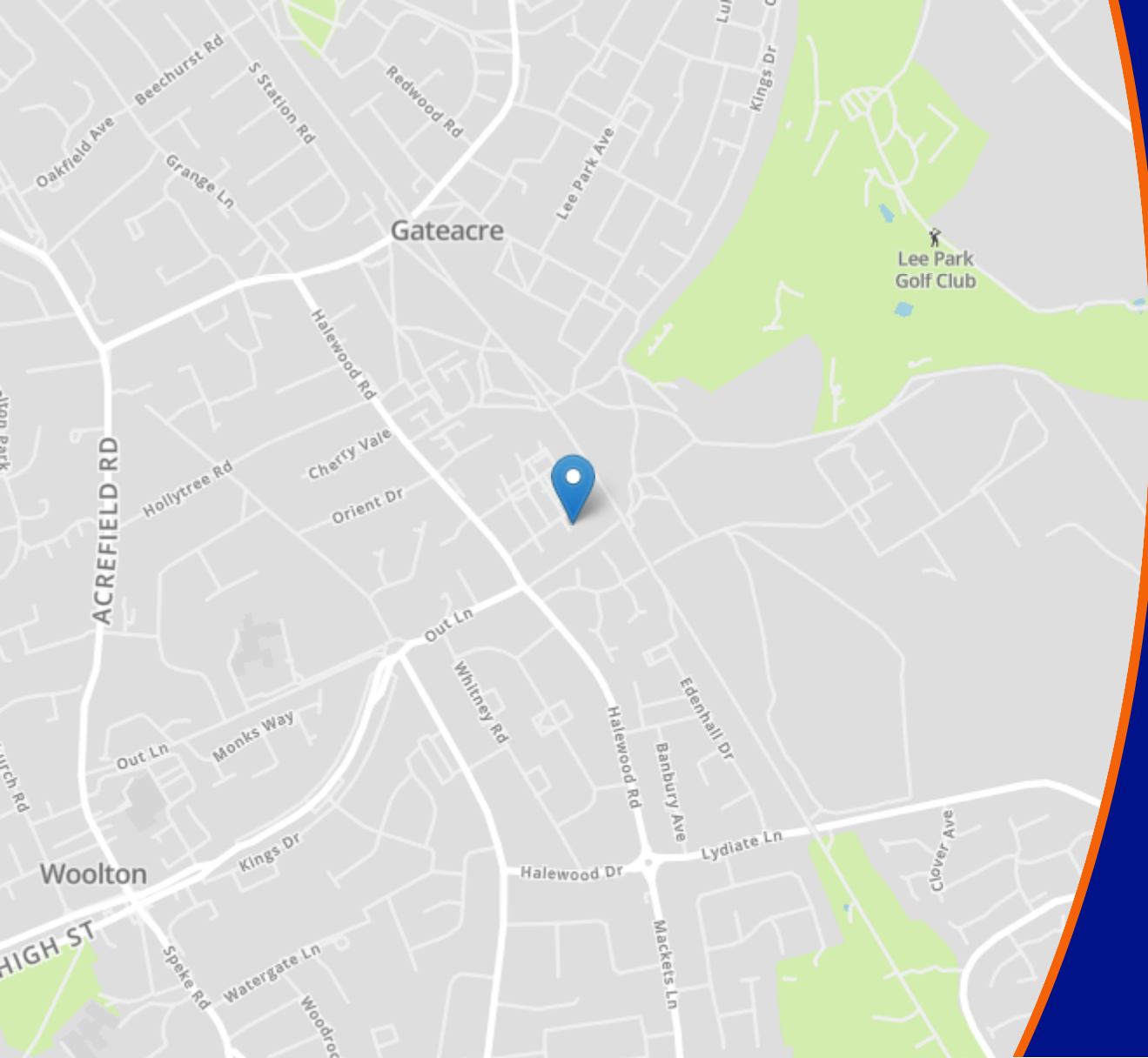
5.00m x 3.00m (16' 5" x 9' 10")

Carpet to flooring, ceiling light, electric wall heater and a UPVC double glazed window.

Bathroom

Vinyl to flooring, ceiling light, electric chrome towel rail, UPVC double glazed window, bath with electric shower over, hand wash basin with pedestal, low level W.C.





Myler & Co

77, Albert Road, Widnes, Cheshire, WA8 6JS

0151 424 5100

info@mylerestates.com