

**RE/MAX**  
**SELECT**

Guide Price £575,000 Freehold



Castleridge Drive, Greenhithe, Kent DA9 9WR



## PROPERTY DESCRIPTION

GUIDE PRICE £575,000 - £600,000 • RE/MAX Select are delighted to offer for sale this immaculate end of terrace house in the sought-after location on the St Clements Lakes' development close to Bluewater shopping centre, transport links, and superb access to motorway networks. This spacious property, finished to a very high standard, comprises 4 bedrooms, fitted kitchen, large living/dining room, downstairs cloakroom, upstairs family bathroom and top floor master bedroom having access to walk-in wardrobe and en-suite, fitted kitchen, large living/dining room, downstairs cloakroom and upstairs family bathroom.

Further benefits include of-street parking, garage, double glazing, gas central heating, and approximately 30ft garden.

Total Internal Area approx: 1,481.43 sq ft (137.63 sq m). EPC Rating B89





## ROOM DESCRIPTIONS

### Ground Floor

#### Hallway

Wood flooring, radiator; understairs cupboard; carpeted stairs to first floor.

#### Living / Dining Room

Wood-effect flooring, radiator, double glazed windows; double glazed french doors to rear garden.

#### Kitchen

Tiled flooring; range of wall and base units with complementary worktops; stainless steel sink and drainer unit with mixer tap; fitted gas hob, fitted double oven, stainless steel extractor hood, integrated fridge/freezer, integrated washing machine; integrated dishwasher; cupboard housing combination boiler; double glazed windows.

#### Cloakroom

Tiled flooring, part-tiled walls, wc, heated towel-rail, wash-hand basin.

### First Floor

#### Landing

Wood-effect flooring, radiator, carpeted stairs leading to second floor, double glazed window.

#### Bedroom

Wood-effect flooring, radiator, fitted wardrobes, double glazed windows.

#### Bedroom

Wood-effect flooring, radiator, fitted wardrobes, double glazed windows.

#### Bedroom

Wood-effect flooring, radiator, fitted wardrobes, double glazed windows.

#### Bathroom

Tiled flooring, part-tiled walls; panelled bath with mixer tap and separate thermostatic rainfall shower fitting; wash-hand basin; w/c, radiator, extractor fan, double glazed window.

### Second Floor

#### Landing

Wood-effect flooring, radiator, access to loft.

#### Bedroom

Wood-effect flooring, radiator, double glazed windows.

#### En-suite

Tiled flooring, part-tiled walls, large walk-in shower enclosure, wc, wash-hand basin, double glazed velux windows.

#### Walk-in Wardrobe

Wood-effect flooring, access to eaves storage cupboard, fitted shelving and storage cupboards.

### External

#### Front Garden

Lawn, mature bushes and shrubs.

#### Rear Garden

Lawn, decked area, paved area, outdoor tap, outdoor light, rear gate to parking space and garage.

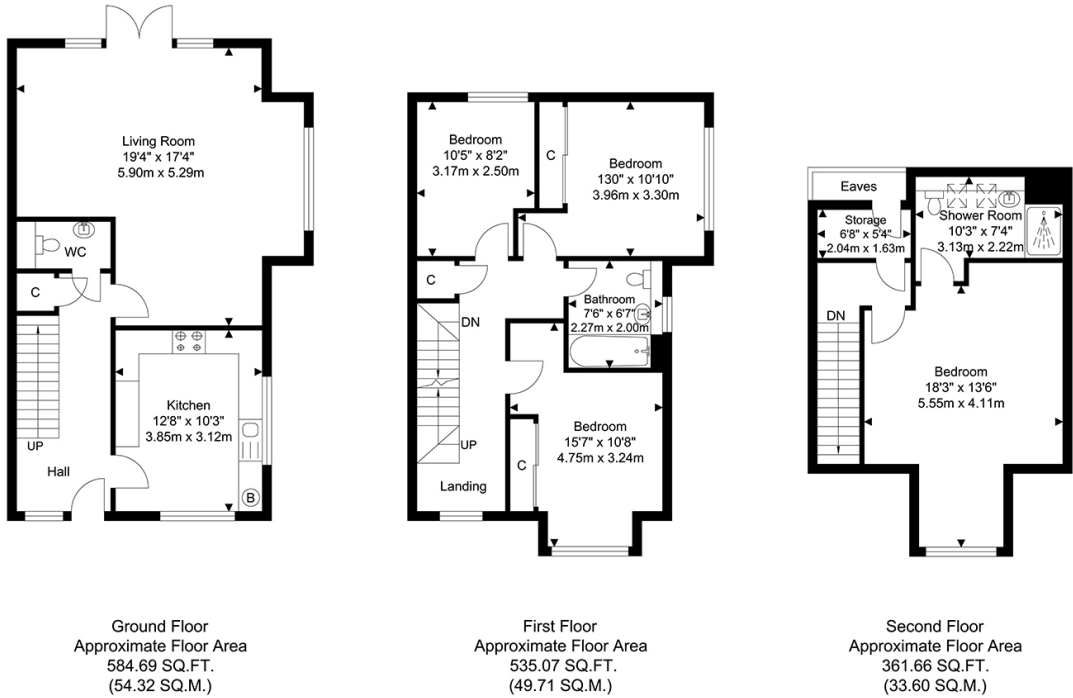
#### Garage

Up and over door, electrical power.

#### Information

- 0.3 miles (approx) to Greenhithe Station with Thameslink
- 0.5 miles (approx) to Bluewater Shopping Centre
- 1.8 miles (approx) to Ebbsfleet International Station (Eurostar)
- 1.6 miles (approx) to Dartford Thames Crossing / M25
- Council Tax : Band F
- Service Charge (subject to annual review)
- \*All service charge information to be verified by seller's solicitor\*

FLOORPLAN



TOTAL APPROX FLOOR AREA 1481.43 SQ. FT / 137.63 SQ. M  
For Identification Purposes Only.

