



18 Tithe Farm Close, Langford, Bedfordshire, SG18 9NE

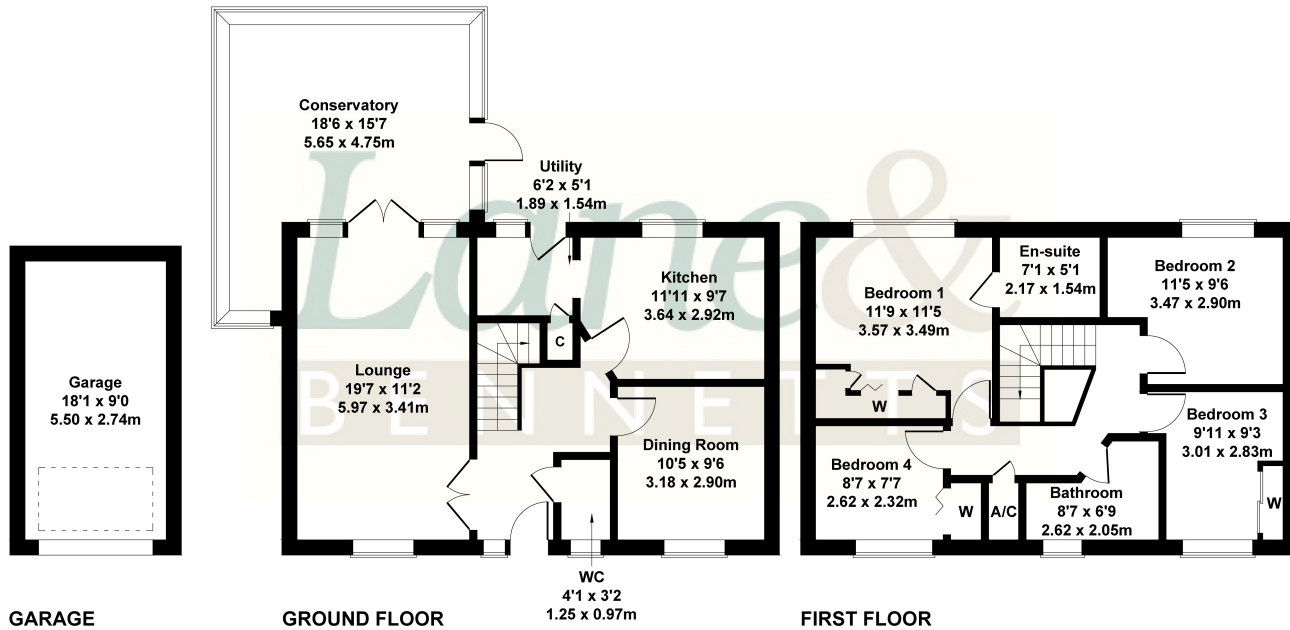
£510,000

Modern four bedroom detached family home situated on a generous sized corner plot in a quiet cul-de-sac. The accommodation includes a spacious lounge with fireplace, separate dining room, kitchen/breakfast room with utility, large conservatory and a downstairs cloakroom and entrance hall. Upstairs the property has four good sized bedrooms with a re-fitted en-suite to the master as well as the recently re-fitted family bathroom. Outside the property benefits from a front garden, side garden and fantastic rear garden with a large log cabin with light and power. Off road parking is also provided for multiple vehicles via a single garage and driveway. This property is available with only a short onward chain.



18 Tithe Farm Close, Langford

Approximate Gross Internal Area
1593 sq ft - 148 sq m



Not to Scale. Produced by The Plan Portal 2024
For Illustrative Purposes Only.

- MODERN FOUR BEDROOM DETACHED FAMILY HOME
- SPACIOUS LOUNGE & SEPARATE DINING ROOM
- GOOD SIZE CONSERVATORY
- KITCHEN/BREAKFAST ROOM & UTILITY
- FAMILY BATHROOM, CLOAKROOM & EN-SUITE
- FRONT, SIDE & FANTASTIC REAR GARDEN
- LARGE MULTI PURPOSE LOG CABIN
- GARAGE & DRIVEWAY FOR MULTIPLE VEHICLES
- QUIET CUL-DE-SAC LOCATION
- AVAILABLE WITH ONLY A SHORT ONWARD CHAIN

