

EVERETT HOMES

Sales | Lettings | Land



11 Flat B, Purbeck Road, Bournemouth, Dorset BH2 5EF

Offers In Excess Of £150,000

01202 143611

www.everetthomes.co.uk

sales@everetthomes.co.uk

Points of Interest

- Ideal First Time Buy
- Ideal Buy To Let
- Modern Fitted Kitchen
- Spacious Double Bedroom
- Moments From Bournemouth Beach & Pier
- Popular West Cliff Location
- Moments From Bournemouth Town Centre
- Close To Amenities & Transport Links
- Offered With No Forward Chain
- Communal Garden

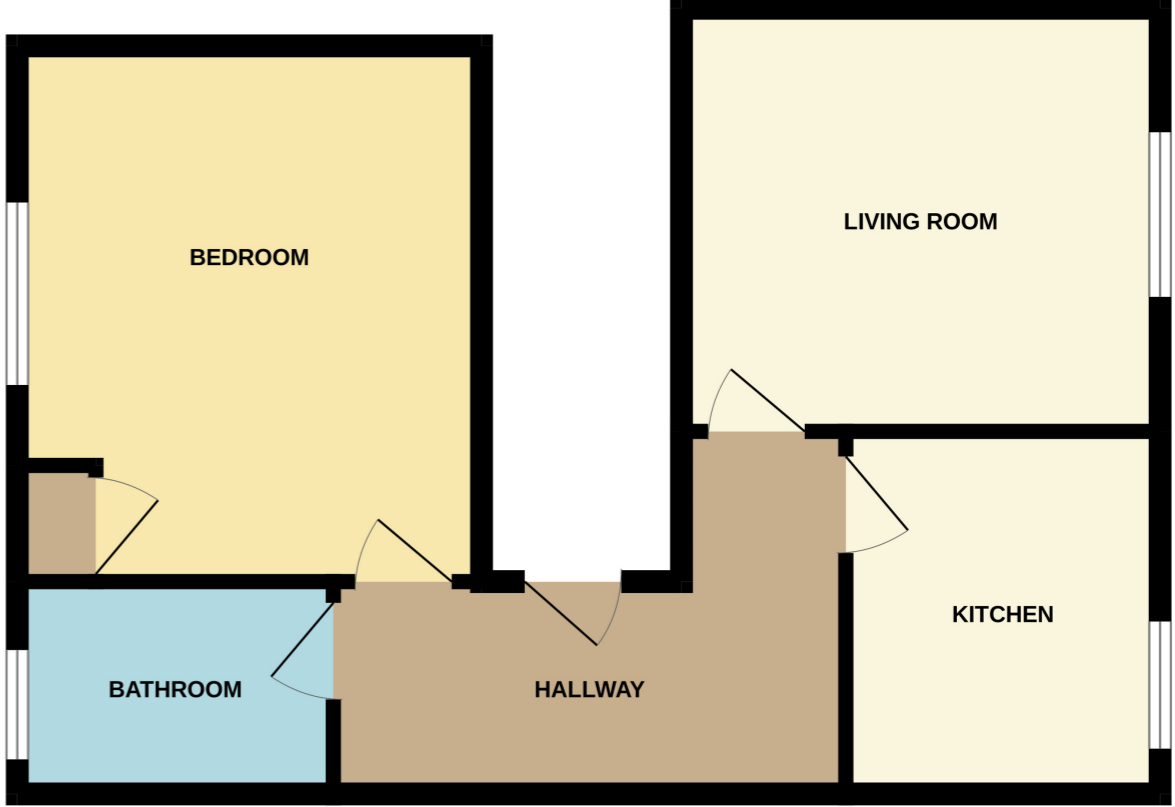
The Property

Everett Homes are delighted to offer for sale this fantastic first time purchase/buy to let investment opportunity in this popular West Cliff location being moments from Bournemouth Beach and Town Centre benefiting from use of a communal garden and being offered with no forward chain.

The accommodation comprises of;

Location

FIRST FLOOR
511 sq.ft. (47.5 sq.m.) approx.



TOTAL FLOOR AREA : 511 sq.ft. (47.5 sq.m.) approx.
Whilst every attempt has been made to ensure the accuracy of the floorplan contained here, measurements of doors, windows, rooms and any other items are approximate and no responsibility is taken for any error, omission or mis-statement. This plan is for illustrative purposes only and should be used as such by any prospective purchaser. The services, systems and appliances shown have not been tested and no guarantee as to their operability or efficiency can be given.
Made with Metropix ©2024