



9 Whittle Court,  
Knowlhill, Milton Keynes, MK5 8FT

Tel: 01908 231 551



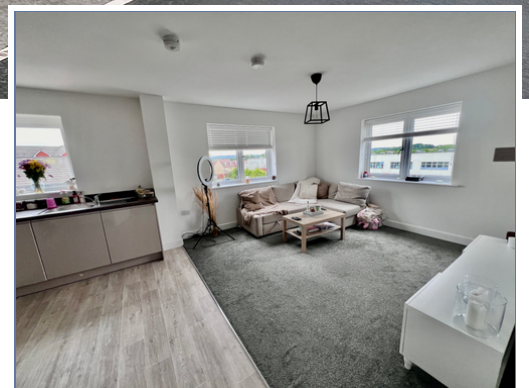
mail@elevationstateagents.com



**Flat 8, 23 St Vincent Avenue, Bletchley,  
Milton Keynes, Buckinghamshire, MK3 5SH**

**£219,950**

- Two Bedrooms
- Two bathrooms
- Open plan living
- Corner apartment with dual aspect windows
- Allocated Parking
- Lakeside walks close by
- EPC Rating



See our full selection of properties online at [www.elevationstateagents.com](http://www.elevationstateagents.com)



This fantastic two bedroom apartment is located the popular modern development of Newton Leys, Newton Leys offers excellent transport links to the A4146 and A5. It also offers easy access to the neighbouring towns of Leighton Buzzard & Bletchley both of which have mainline train stations. It is also just a short drive to the city of Milton Keynes and all of its amenities. To arrange a viewing please call the elevation team.

No Ground Rent

Annual Service charge - £1,500

Council Tax band B

Energy rating B

64 square metres

### **Disclaimer**

Whilst we have endeavoured to prepare our sales particulars accurately none of the services, appliances or equipment have been tested. A buyer should satisfy themselves on such matters prior to purchase. Any measurements or distances mentioned in these particulars are for guide reference only. If such particulars are fundamental to a purchase, buyers should rely on their own enquiries. All enquiries should be directed to Elevation Estate Agents in the first instance.