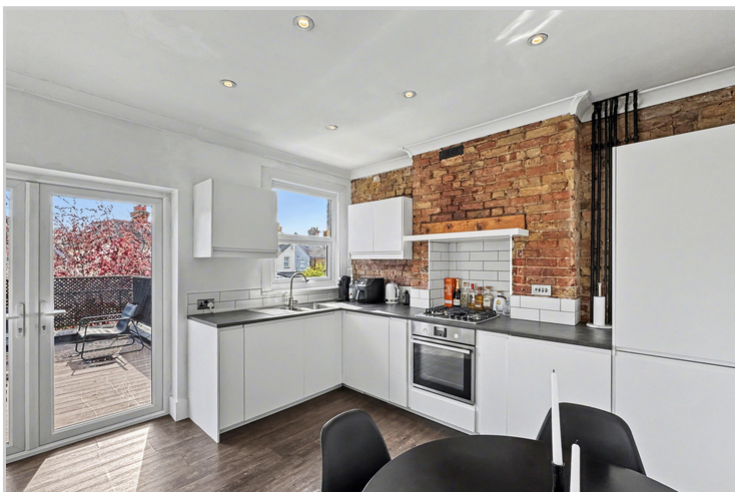


36a Bedford Road, Sidcup, Kent, DA15 7JP

Property Images









First Floor

Approx. 59.4 sq. metres (639.0 sq. feet)
(excluding Balcony)

Balcony
4.59m x 3.56m
(15'1" x 11'8")

**Lounge /
Diner /
Kitchen**
3.70m x 6.50m
(12'2" x 21'4")

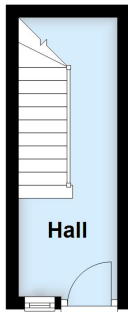
Landing

Bedroom 2
3.69m x 3.20m
(12'1" x 10'6")

Bedroom 1
3.69m (12'1") plus bay
x 3.20m (10'6")

Ground Floor

Approx. 7.2 sq. metres (77.4 sq. feet)



Total area: approx. 66.6 sq. metres (716.4 sq. feet)

This plan is for general layout guidance and may not be to scale.
Plan produced using PlanUp.