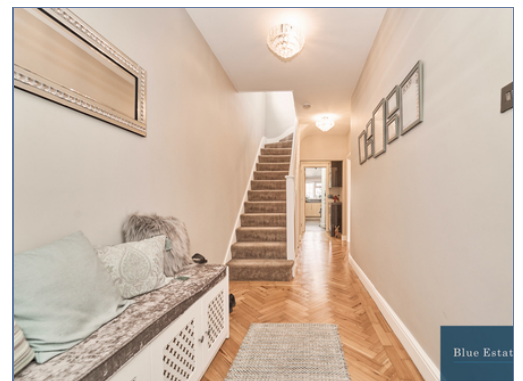
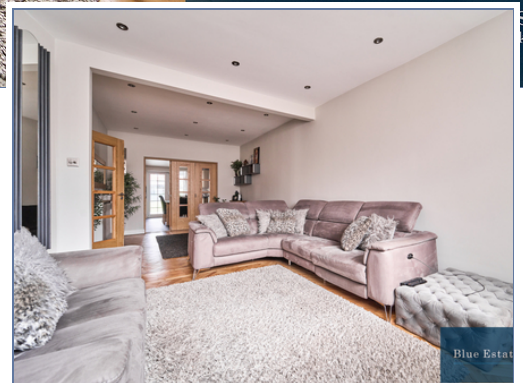




**42 The Warren, Hounslow, Greater London,
TW5 0JN**

£875,000 Freehold

- Four Well-Proportioned Bedrooms – Includes a loft conversion with a spacious principal bedroom and private en-suite
- Extended Modern Kitchen – Stylish and fully fitted with contemporary units and integrated appliances, ideal for family living and entertaining
- Spacious Through Lounge – Bright and airy reception area with elegant parquet flooring, perfect for relaxing or hosting guests
- Ground Floor WC & First Floor Shower Suite – Both finished to a high modern standard, offering comfort and convenience
- Fitted Wardrobes – Thoughtfully designed storage solutions in bedrooms for a clutter-free lifestyle
- Loft Conversion with En-Suite – A beautifully finished additional floor offering a private retreat or guest suite
- Beautifully Maintained Garden – Landscaped and well-kept, perfect for summer evenings, with space for children to play or adults to unwind
- Multi-Use Outbuilding – Ideal as a home office, gym, studio, or extra storage — highly versatile to suit your needs
- Off-Street Parking for Two Vehicles – Private driveway to the front of the property provides





Stunning 4-Bedroom Semi-Detached Home | Prime Heston Location | Presented by Blue Estate Agents Blue Estate Agents are proud to present this beautifully presented and extended four-bedroom semi-detached home, situated in a sought-after residential road in the heart of Heston, Hounslow.

This impressive property has been thoughtfully modernised throughout, offering generous living spaces, contemporary finishes, and a versatile layout perfect for growing families. Step through the welcoming entrance, where elegant parquet flooring flows seamlessly into a spacious and light-filled through lounge — ideal for both entertaining and relaxing. The lounge leads directly into a stylish and extended modern kitchen, complete with sleek cabinetry, integrated appliances, and ample workspace, creating the heart of the home.

The ground floor also benefits from a chic and fully tiled WC, designed with modern convenience in mind. Upstairs, you'll find two generous double bedrooms featuring fitted wardrobes, providing excellent storage and comfort. A well-proportioned single bedroom completes this floor, perfect for a child's room, guest room, or home office. The family shower suite is sleek and contemporary, offering both style and functionality.

The top floor has been smartly converted into a spacious principal bedroom with its own en-suite bathroom. This private retreat offers excellent natural light and thoughtful finishes, ideal for relaxation and privacy. To the rear, the property boasts a beautifully maintained garden — a peaceful outdoor haven. It includes a well-sized outbuilding that can be used flexibly as a home gym, office, or additional storage. There's also a separate secure storage area, perfect for garden tools or seasonal items.

To the front of the property, there is convenient off-street parking for two vehicles, adding to the practicality and ease of daily living. Perfectly positioned in a popular and family-friendly location in Heston, this home is within close proximity to well-regarded schools, transport links, parks, and local amenities. Commuters will appreciate easy access to the M4/M25 and Heathrow Airport, while nearby bus routes and stations connect you quickly to Hounslow and Central London.

This stunning family home offers a rare combination of space, style, and practicality. Early viewing is highly recommended — contact Blue Estate Agents today to arrange your private tour.

Disclaimer

Whilst we have endeavoured to prepare our sales particulars accurately none of the services, appliances or equipment have been tested. A buyer should satisfy themselves on such matters prior to purchase. Any measurements or distances mentioned in these particulars are for guide reference only. If such particulars are fundamental to a purchase, buyers should rely on their own enquiries. All enquiries should be directed to Blue Estate Agents in the first instance.

