



GREGORY BROWN
RESIDENTIAL SALES & LETTINGS

£269,950 Share of Freehold
FOR SALE



Gresham Road, Staines-upon-Thames, Surrey, TW18 2AN

WELL PRESENTED AND SPACIOUS SHARE OF FREEHOLD APARTMENT WITH GARAGE AND SHARED GARDEN LOCATED WITHIN MOMENTS OF TOWN CENTRE & MAINLINE TRAIN STATION. The property benefits from a spacious lounge/diner, modern fitted kitchen, large double bedroom, modern white bathroom suite, large shared rear garden, driveway and garage. Viewings Highly Recommended!

Gregory Brown

127a, High Street, Staines-upon-Thames, TW18 4PD

01784 451458

staines@gregory-brown.co.uk

ROOM DESCRIPTIONS

Entrance Hall

With hardwood door, light and power points, radiator, understairs storage cupboard, stairs leading down to bedroom and doors to:

Lounge

Front aspect UPVC double glazed window, light and power points, radiator, TV point.



Kitchen

Rear aspect UPVC double glazed window, range of fitted units at eye and base level, sink drainer unit, space for cooker, washing machine, dishwasher and fridge & freezer. Radiator, wall mounted boiler.



Bedroom

Rear aspect UPVC double glazed window, light and power points, radiator, walk-in wardrobe.



Bathroom

Rear aspect UPVC double glazed window, panel enclosed bath, low level W.C, wash hand basin inset to cabinet, partly tiled walls, heated towel rail, light point.



Outside

Front Garden

Driveway leading to Garage

Rear Garden

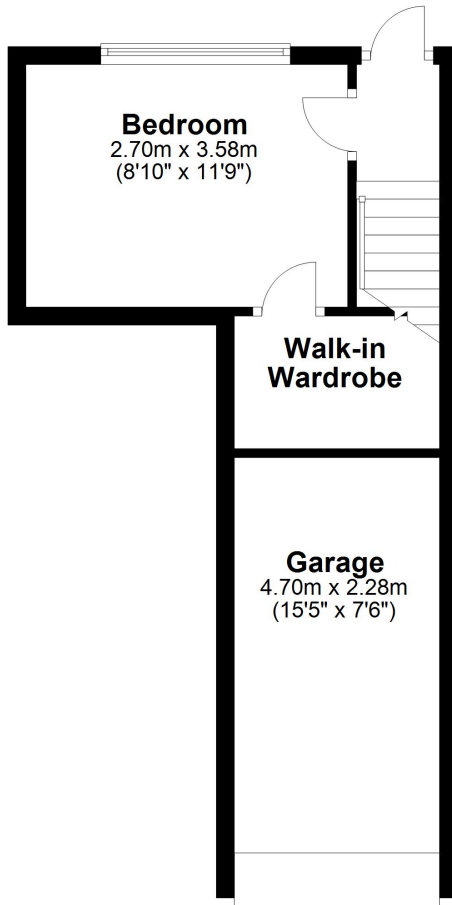
Shared garden, mainly laid to lawn with flower and shrub borders.



FLOORPLAN

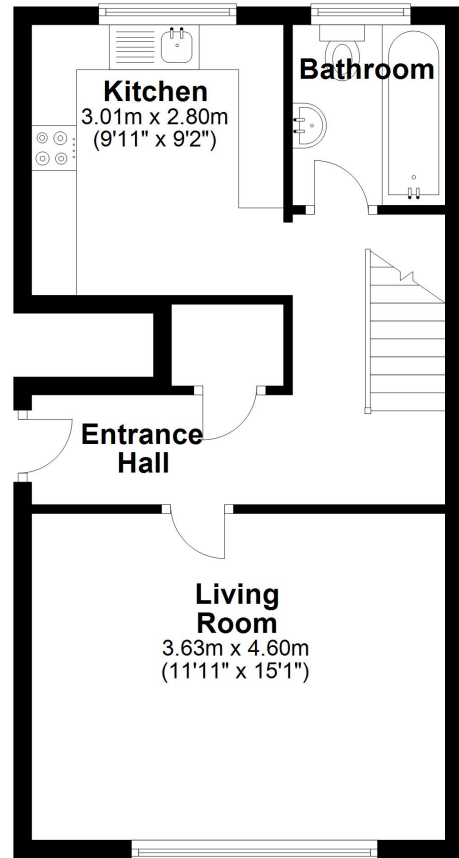
Ground Floor

Approx. 27.0 sq. metres (290.3 sq. feet)



First Floor

Approx. 40.0 sq. metres (430.9 sq. feet)



Total area: approx. 67.0 sq. metres (721.2 sq. feet)