



T: 01909 509001
E: info@bartropanddilks.co.uk
W: www.bartropanddilks.co.uk
A: 78 Bridge Street, Worksop, S80 1JA

FOR SALE

£230,000

1 Chatsworth Road, Worksop, Nottinghamshire. S81 0LQ



Viewing is most highly recommended for this much improved, three bedroom extended semi detached home that has gas central heating and uPVC double glazed windows. Having a high standard of fixtures and fittings throughout, the property is set within this desirable area and in distance of local schools and amenities. On a corner plot with front, side and rear gardens and of interest for first time buyers or growing families, the accommodation in brief comprises of; entrance hallway, lounge with media wall, dining room with sliding patio doors to the sitting room which in turn has French doors leading to the extensive patio. Excellent fitted kitchen. On the first floor; landing, three bedrooms, bedrooms one and two with fitted wardrobes, modern refitted white bathroom suite. Outside; gardens to three sides, the side and rear being enclosed providing excellent entertaining areas, driveway. Viewing advised.

Ground Floor

Entrance Hallway

With entrance door, stairs to the first floor, central heating radiator, storage.

Lounge 4.18m x 2.91m (13' 9" x 9' 7")

With a media wall, front facing window, central heating radiator.

Dining Room 3.79m x 3.01m (12' 5" x 9' 11")

With a laminate floor, sliding patio doors to the sitting room, central heating radiator.

Sitting Room 4.38m x 3.50m (14' 4" x 11' 6")

With a pitched roof, side facing French doors to the garden, laminate floor.

Kitchen 3.14m x 2.91m (10' 4" x 9' 7")

With a excellent range of fitted wall and base units, worksurfaces, sink unit, five ring gas hob with extractor above and electric oven below, side window and door, rear window, concealed plumbing for an automatic washing machine, integrated dishwasher.

First Floor

Landing

With a storage cupboard, side facing window, loft access.

Bedroom One 3.50m x 3.35m (11' 6" x 11' 0")

With sliding wardrobes to one and half walls, front facing window, central heating radiator.

Bedroom Two 3.81m x 3.11m (12' 6" x 10' 2")

With two rear facing windows, storage cupboard, central heating radiator.

Bedroom Three 2.85m x 2.41m (9' 4" x 7' 11")

With a front facing window, central heating radiator.

Bathroom

Delightful and modern refitted suite that comprises of panelled bath with mains shower above and glass shower screen, wash hand basin, low flush w.c, side and rear facing windows, heated towel rail, storage, tiling.

Outside

Gardens

Situated on a corner plot with front, side and rear gardens. The side and rear being enclosed with extensive Indian stone patio which is ideal for entertaining, rear artificial lawn.

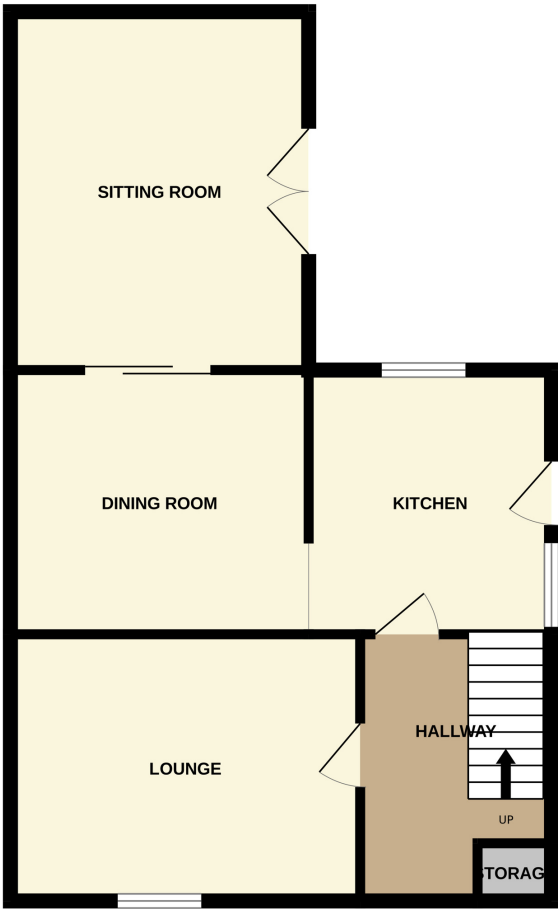
Driveway

To the side.





GROUND FLOOR



1ST FLOOR



Whilst every attempt has been made to ensure the accuracy of the floorplan contained here, measurements of doors, windows, rooms and any other items are approximate and no responsibility is taken for any error, omission or mis-statement. This plan is for illustrative purposes only and should be used as such by any prospective purchaser. The services, systems and appliances shown have not been tested and no guarantee as to their operability or efficiency can be given.
Made with Metropix ©2025