

# Coming Soon



SOLE  
AGENT

## 2F St Marys Court

La Rue Piette | Castel | GY57AA

Light and spacious two-bedroom apartment conveniently located in the heart of Castel with amenities nearby. This top floor apartment comprises a large lounge, kitchen/diner two double bedrooms with built in wardrobes, spacious bathroom and utility area. Set within well kept communal gardens, the property benefits from parking for one car and visitor parking. Regret no smokers, sharers or pets. Older child considered. Available from mid-March.

**£2,100 pcm**

2 BEDROOMS

1 BATHROOM

1 RECEPTION

Shields  
& Rutland



# SPECIFICATIONS



**Entrance Hall**

**Lounge**

**Kitchen/Diner**

**Bedroom 1**

**Bedroom 2**

**Bathroom**

**Utility Room**

## **PRICE INCLUDES**

Flooring and light fittings.

## **SPECIAL FEATURES**

- Light and spacious
- Convenient location
- Communal garden
- Parking for one car

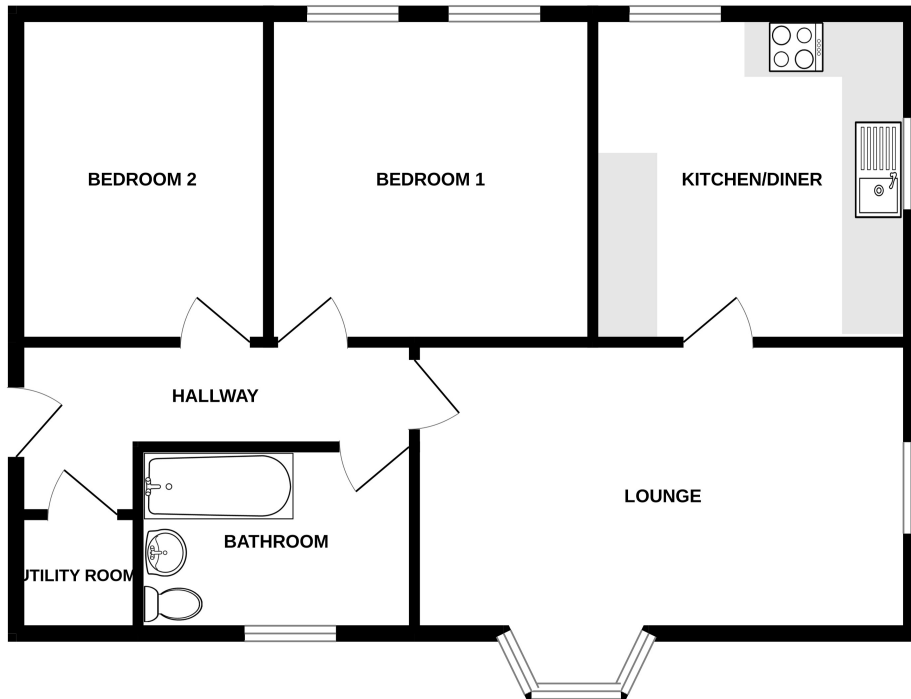
## **SERVICES**

Mains water, electricity and drainage.

## **APPLIANCES INCLUDED**

To be confirmed

## **SCHOOL CATCHMENT**



2F ST MARYS COURT

Whilst every attempt has been made to ensure the accuracy of the floorplan contained here, measurements of doors, windows, rooms and any other items are approximate and no responsibility is taken for any error, omission or mis-statement. This plan is for illustrative purposes only and should be used as such by any prospective purchaser. The services, systems and appliances shown have not been tested and no guarantee as to their operability or efficiency can be given.  
Made with Metropix ©2024