

Upper Maisonette, 7 Cherry Garden Avenue

Folkestone
CT19 5LB

£250,000 LEASEHOLD

DRAFT DETAILS... FOR SALE WITH BURNAP + ABEL... Burnap + Abel are delighted to offer this stunning three bedroom maisonette situated just a short walk from Folkestone West Train Station. The property is in our opinion in excellent decorative order and the accommodation comprises lounge, kitchen, family bathroom and three bedrooms. Additional benefits include a long lease and no onward chain. For your chance to view call sole agent Burnap + Abel now on 01303 258590.



Entrance Hall/Landing

Lounge

16' 11" x 14' 8" (5.16m x 4.47m)

Kitchen

9' 0" x 8' 8" (2.74m x 2.64m)

Second Floor Landing

Bedroom One

14' 1" x 12' 2" (4.29m x 3.71m)

Bedroom Two

13' 10" x 11' 1" (4.22m x 3.38m)

Bedroom Three

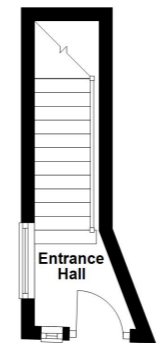
9' 9" x 9' 0" (2.97m x 2.74m)

Bathroom

9' 9" x 5' 8" (2.97m x 1.73m)

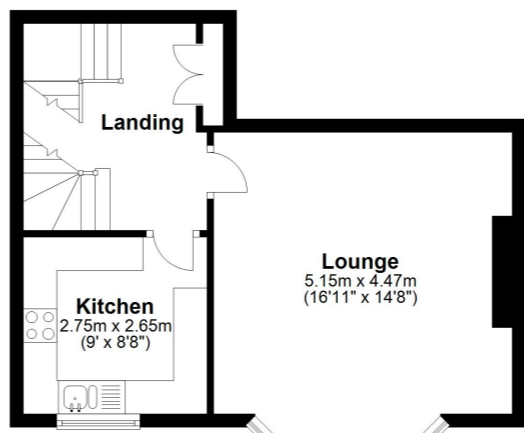
Ground Floor

Approx. 4.8 sq. metres (52.0 sq. feet)



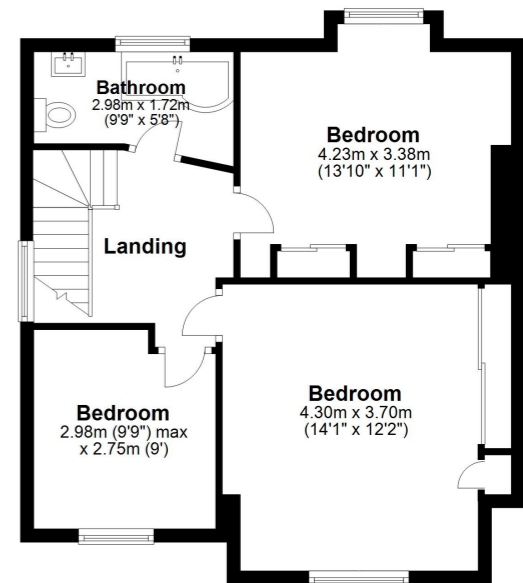
First Floor

Approx. 36.3 sq. metres (390.4 sq. feet)



Second Floor

Approx. 54.5 sq. metres (586.1 sq. feet)



Total area: approx. 95.6 sq. metres (1028.5 sq. feet)

Whilst every attempt has been made to ensure the accuracy of the floor plan contained here, measurements of doors, windows, rooms and any other items are approximate and no responsibility is taken for any error, omission or mis-statement. This plan is for illustrative purposes only and should be used as such by any prospective purchaser.
Plan produced using PlanUp.

