

WILKES STREET

LONDON E1 6QF

T B 

THE PROPERTY BROKERS

Freehold

£3,000,000

- Victorian freehold
- Spanning over 2700 sqft
- 3 en-suite bathrooms
- Large terrace
- Lateral open plan living

A Victorian townhouse spanning over 2,700 sqft (approx.) with lateral space on every floor. Unlike most of the Huguenot Georgian houses in Spitalfields, this five floor, three double bedroom, three bathroom freehold house is not Grade II listed. This has enabled a previous owner to completely open up and remodel each floor with open plan living in mind with the addition of a large rear extension and roof terrace overlooking gardens and the backdrop of the City. Stripped back and beautifully simplified throughout retaining it's Victorian facade, original wood flooring and staircase which makes this a rare and unique find.

Having been completely refurbished throughout, the ground floor has a large open plan kitchen with marble worktops, separate utility room, w/c and spacious dining room.



020 7993 6553

INFO@TBAPROPERTY.COM

WWW.TBAPROPERTY.COM

WILKES STREET

LONDON E1 6QF



THE PROPERTY BROKERS

Down to the lower ground floor is a self contained bedroom/two room space complete with shower room and vaults for storage.

On the first floor is a double living room with fireplaces and French doors leading out to a large roof terrace which benefits from great views over neighbouring gardens towards the City. The top two floors contain a further two master bedrooms both with large en-suite bathrooms.

Spitalfields Market and Liverpool St Station are within a 3-5 minute walk and Shoreditch High St Overground/Aldgate are also easily reachable on foot. With too many popular local restaurants, bars and venues to list, the nightlife of Shoreditch and Old St are just around the corner.



020 7993 6553

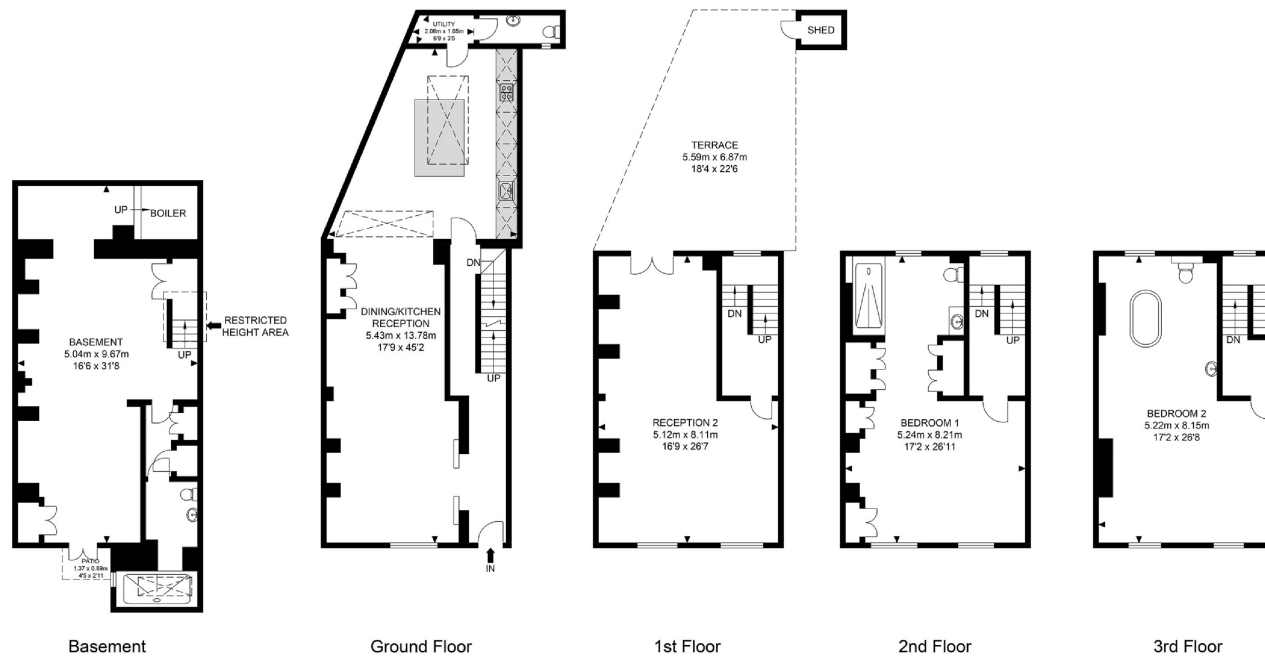
INFO@TBAPROPERTY.COM

WWW.TBAPROPERTY.COM

WILKES STREET
LONDON E1 6QF



Wilkes Street



Basement

Ground Floor

1st Floor

2nd Floor

3rd Floor

APPROX. GROSS INTERNAL FLOOR AREA 2732 SQ FT / 253.81 SQM

APPROX. GROSS INTERNAL FLOOR AREA INC. RESTRICTED HEIGHT AREA 2691.19 SQ FT / 250.02 SQM



Whilst every attempt has been made to ensure the accuracy of the floor plan contained here, measurements of doors, windows, rooms and any other items are approximates and no responsibility is taken for any error, omission or mis-statement. This plan is for illustrative purposes only and should be used as such by any prospective purchaser. The service, system and appliances shown have not been tested and no guarantee as to their operability or efficiency can be given.

© SpacePhoto
Photography and Floor Plan

SALES
LETTINGS
OFF MARKET
ACQUISITIONS
DEVELOPMENT
COMMERCIAL
VALUATIONS

TOBIAS ALLAN

Director

07970 963 478

JAMES DANTON

Director

07930 858 612

ADAM JONES

Director

07769 275 027

