



7 Bushy Park, Wainfelin, Pontypool. NP4 6ED
£200,000
Tenure Freehold

- BAY FRONTED MID TERRACE HOUSE
- THREE DOUBLE BEDROOMS
- ATTRACTIVE OPEN PLAN GROUND FLOOR
- LOUNGE/DINING ROOM
- QUALITY WELL FITTED KITCHEN.
- LARGE FIRST FLOOR BATHROOM
- VIEWS TO FRONT
- TERRACED REAR GARDEN WITH ACCESS
- SPACIOUS FAMILY ACCOMMODATION
- VIEWING RECOMMENDED

EXTENDED BAY FRONTED TERRACE, THREE DOUBLE BEDROOMS AND LARGE FIRST FLOOR BATHROOM, WELL FITTED WITH OAK FRONTED KITCHEN, POPULAR AREA WITH FAR REACHING FRONT VIEWS

A deceptively spacious 3 double bedroom Victorian mid terrace in this popular location with views and open green space to front less than a mile from Pontypool Town Centre. The home has been greatly improved by its current owners including a quality fitted kitchen with oak fronted units and a large four piece tiled bathroom.

On the ground floor is an entrance hall, an open plan sociable lounge/dining/kitchen and a utility room.

On the first floor are two of the bedrooms and the bathroom.

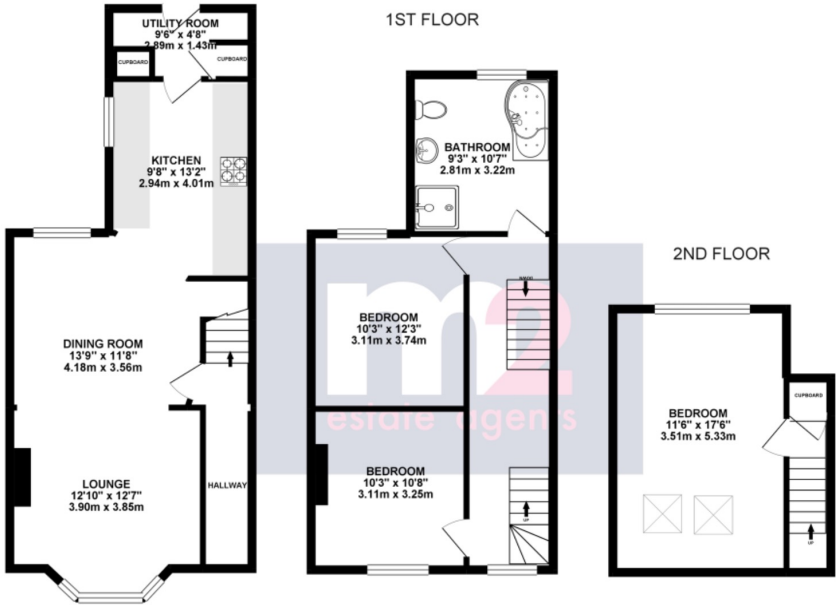
On the top floor is the large master bedroom with storage.

Outside there is a terraced garden with steps up to rear access gate and bike store.

Gas central heating is via a combi boiler.

Recommended. Council Tax Band B. EPC tbc.

Services:
All mains services
Council Tax Band:
Ta



Whilst every attempt has been made to ensure the accuracy of the floorplan contained here, measurements of doors, windows, rooms and any other items are approximate and no responsibility is taken for any error, omission or mis-statement. This plan is for illustrative purposes only and should be used as such by any prospective purchaser. The services, systems and appliances shown have not been tested and no guarantee as to their operability or efficiency can be given.
Made with Metrepro ©2023



All room sizes are approximate. Electrical installations, plumbing, central heating and drainage installations are noted on the basis of a visual inspection only. They have not been tested and no warranty of condition or fitness for purpose is implied in their inclusion. Potential purchasers are warned that they must make their own enquiries as to the condition of the appliances, installations or any element of the structure or fabric of the property.

M2 Estate Agents for themselves and for the Vendors and Lessors of this property whose agents they are give notice that, (i) the particulars are set out as a general outline only for the guidance of the intended Purchasers or Lessors, and do not constitute part of an offer or contract (ii) all descriptions, dimensions, reference to condition and necessary permissions for the use and occupation and other details are given without responsibility and any intending Purchasers or Tenants should not rely on them as statements or representations of fact but satisfy themselves by inspection or otherwise as to the correctness of each of them (iii) no person in the employment of M2 Estate Agents has any authority to make or give any representation or warranty whatever in relation to this property.

I/We acknowledge that I/we have read and understand your terms letter and that these property (7 Bushy Park, Pontypool, NP4 6ED) details have been checked and:

Are Correct

Are Correct with Attached Amendments

Signature _____ Print Name _____

Date _____

Signature _____ Print Name _____

Date _____