

59 Exmouth Road, Welling, Kent, DA16 1EB
£400,000 Freehold

Description

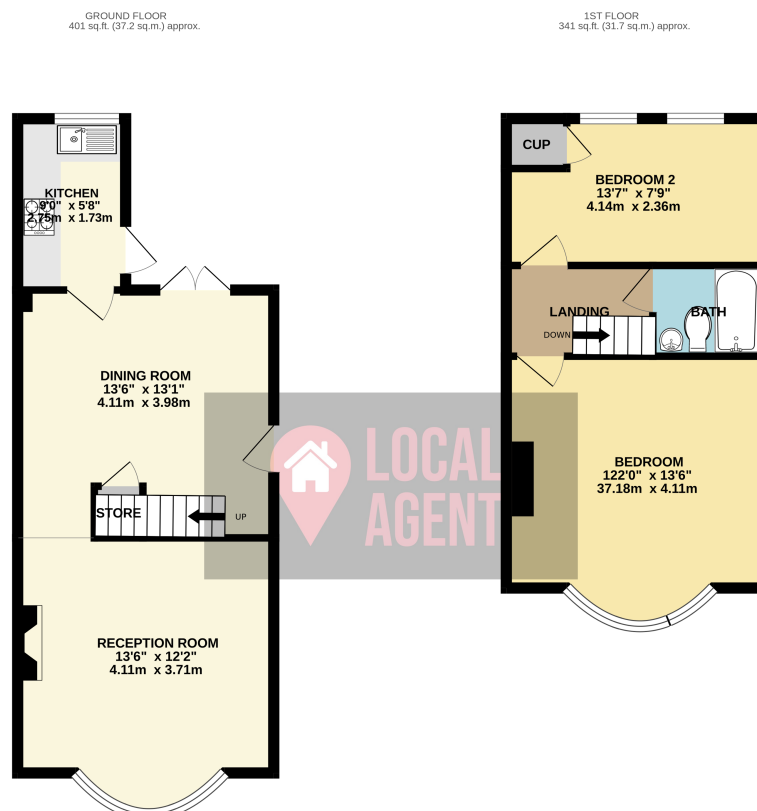
Guide Price £400,000 - £425,000

This beautifully presented two double bedroom semi detached property has lots to offer. The ground floor benefits from a spacious lounge with a bay window creating lots of natural light, the dining room is a great size which has double doors to the garden. The modern kitchen is to the rear of the property and has integrated appliances and door with also leads to the garden. Upstairs comprises of two double bedrooms and modern bathroom. Externally there is a large garden which is mainly laid to lawn with small shrubs and plants. There is potential to extend the property subject to planning permission.

Use our online diary to request your viewing.

Location

Welling is a town in the Bexley borough which has a variety of shops, pubs, restaurants, leisure centres. The borough is also known for its four grammar schools as well as the popular St Michaels East Wickham which has a Outstanding Ofsted Rating, Barringtons and Fosters with a Good Rating. Danson Park is renown for its historic house, boating lake and sport facilities. The property is situated excellently for the London commuter either via the mainline train station which is approx. 1.1 miles or via the A2 & A20 networks.



TOTAL FLOOR AREA: 742 sq.ft. (69.0 sq.m.) approx.
Whilst every attempt has been made to ensure the accuracy of the floorplan contained here, measurements