

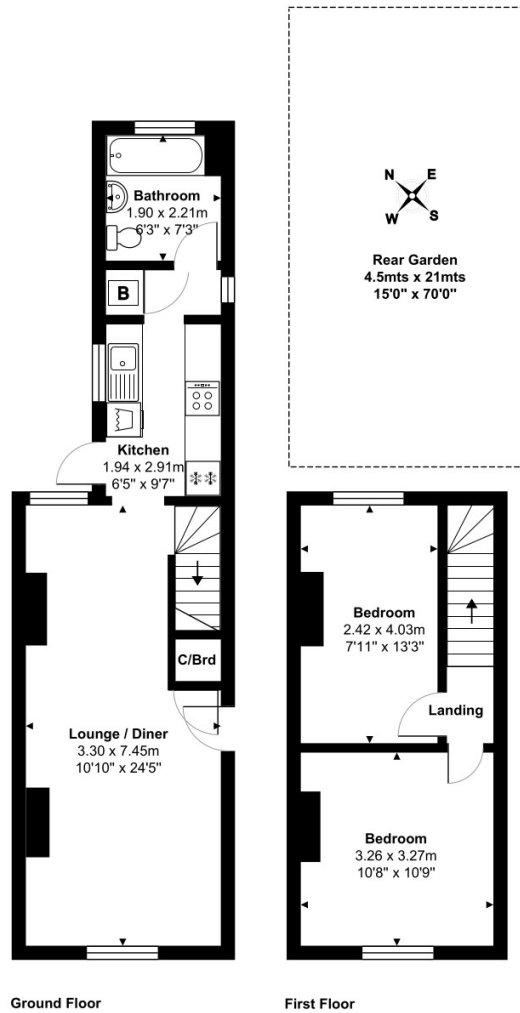


63 Hythe Road Surrey, STAINES-UPON-THAMES, TW18 3EE

WELL PRESENTED AND SPACIOUS TWO BEDROOM CHARACTER COTTAGE SITUATED ALONG THIS SOUGHT AFTER ROAD IDEALLY LOCATED FOR STAINES TOWN CENTRE, LOCAL MOTORWAY NETWORKS & THE RIVER THAMES. The property benefits from a spacious lounge/diner, separate modern fitted kitchen, two double bedrooms, modern white bathroom suite and large secluded rear garden. No Onward Chain. Viewings Highly Recommended!

ROOM DESCRIPTIONS

FLOORPLAN



Total Area: 61.1 m² ... 658 ft²

All measurements are approximate and for display purposes only.

127a, High Street, Staines-upon-Thames, TW18 4PD

01784 451458

staines@gregory-brown.co.uk