



Wilshere Court

Queen Street | HITCHIN | Hertfordshire | SG4 9TT

www.stonegate-estates.co.uk



WILSHERE COURT

Property Description

Situated on the first floor of this well regarded Pegasus retirement development, we offer this well presented and spacious one bedroom apartment.

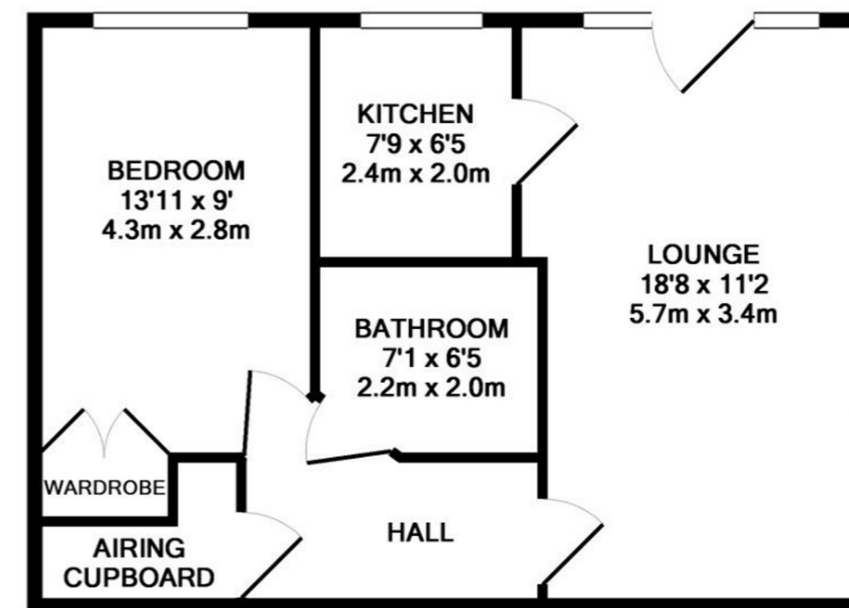
There are numerous benefits to include a dual aspect lounge with Juliet balcony, a modern well appointed kitchen and a fitted and spacious bathroom to name just three.

Wilshere Court has a communal lounge, visitors guest suite, laundry facilities and attractive communal gardens along with a development manager and parking.

Hitchin town provides a broad range of shops and a regular traditional market, together with a good selection of restaurants, bars and pubs within its historic centre. The town also provides a swimming centre, theatres and a library, whilst the commuter is served by the main line railway station (Kings Cross - 30 minutes) and direct links to the A1(M).

£215,000 Leasehold





8 WILSHERE COURT, HITCHIN
TOTAL APPROX. FLOOR AREA 495 SQ.FT. (46.0 SQ.M.)

Whilst every attempt has been made to ensure the accuracy of the floor plan contained here, measurements of doors, windows, rooms and any other items are approximate and no responsibility is taken for any error, omission, or mis-statement. This plan is for illustrative purposes only and should be used as such by any prospective purchaser. The services, systems and appliances shown have not been tested and no guarantee as to their operability or efficiency can be given
Made with Metropix ©2014



- One Bedroom Retirement Apartment
- Town Centre Location
- Dual Aspect Living Room
- Juliet Balcony
- Well Appointed Kitchen
- No Onward Chain
- Parking & Communal Gardens
- Residents Lounge

EPC Rating:

Stonegate Estate Agents

01462 438979

sales@stonegate-estates.co.uk | www.stonegate-estates.co.uk

