

Firecrest Road, Tile Kiln, Chelmsford, Essex, CM2 8XL



Energy Efficiency Rating F



£375,000

# Firecrest Road, Tile Kiln, Chelmsford, Essex, CM2 8XL



Energy Efficiency Rating		Current	Potential
Very energy efficient - lower running costs			
(92 to 100)	A		
(81 to 91)	B		87
(69 to 80)	C		
(55 to 68)	D		
(39 to 54)	E		
(21 to 38)	F	33	
(1 to 20)	G		
Not energy efficient - higher running costs			
England, Wales & N.Ireland		EU Directive 2002/91/EC	

Bond Residential are delighted to offer for sale this semi detached house situated in Tile Kiln.

The property offers an entrance hall with storage cupboard, ground floor WC, lounge, dining area and kitchen. To the first floor there are three bedrooms and a family bathroom. Outside the property benefits from a driveway to the side of the house which provides off road parking, garage and rear garden.

Tile Kiln is a popular development located within 3 miles of the city centre and the highly regarded Mildmay Primary School is within walking distance. Bus routes close by offer frequent services to the City Centre with its numerous restaurants, bars and comprehensive shopping facilities including and the prestigious Bond Street Shopping precinct, in addition to the mainline station with frequent services into London Liverpool Street.

- Semi Detached House
- No Onward Chain
- Ground Floor WC
- Lounge
- Dining Area
- Kitchen
- Garage & Driveway
- Rear Garden

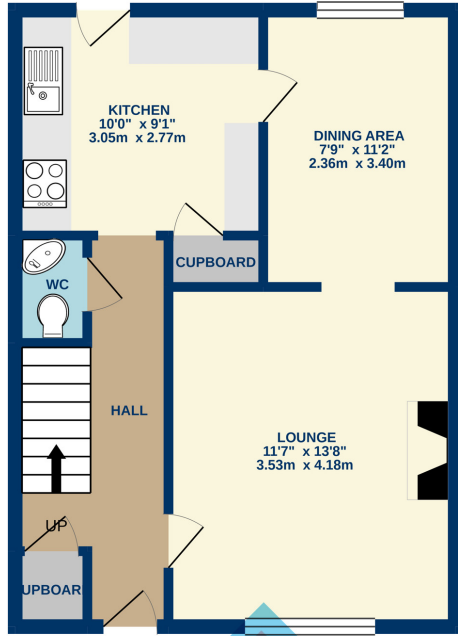


**01245 500599**

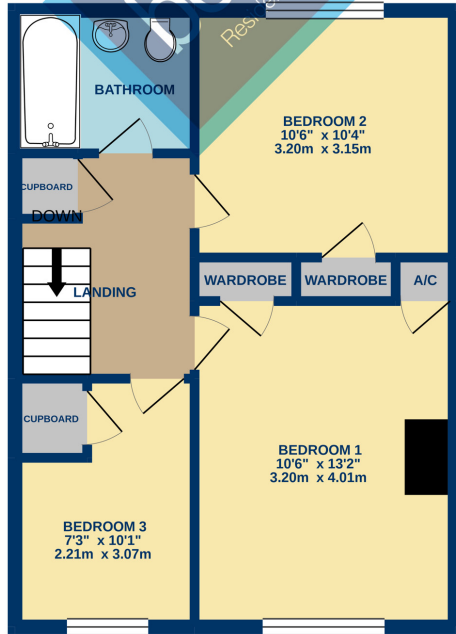
**[www.bondresidential.co.uk](http://www.bondresidential.co.uk)**

**f/bondresidential**  **@bondresidential**

GROUND FLOOR



1ST FLOOR



Whilst every attempt has been made to ensure the accuracy of the floorplan contained here, measurements of doors, windows, rooms and any other items are approximate and no responsibility is taken for any error, omission or mis-statement. This plan is for illustrative purposes only and should be used as such by any prospective purchaser. The services, systems and appliances shown have not been tested and no guarantee as to their operability or efficiency can be given.  
Made with Metropix ©2021

# FLOORPLAN



01245 500599  
[www.bondresidential.co.uk](http://www.bondresidential.co.uk)  
43 New London Road, Chelmsford, CM2 0ND



Consumer Protection from Unfair Trading Regulations 2008 and the Business Protection from Misleading Marketing Regulations 2008.  
Bond Residential have made every effort to ensure that consumers and/or businesses are treated fairly and provided with accurate material information as required by law. We have not tested any apparatus, equipment, fixture, fitting or any services and as such are unable to verify they are in working order, fit for their purpose, or within the ownership of the seller or landlord. Neither have we been able to check the legal documentation to verify the legal status of the property. We therefore advise potential buyers or tenants to verify these matters with their own solicitors or other advisers.