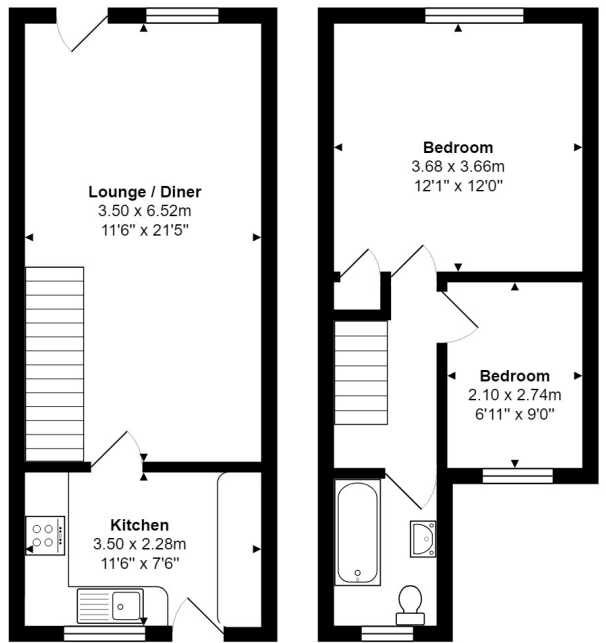


Queen Street, Chelmsford
£360,000 Freehold

- Attractive Victorian terrace house
- No onward chain
- First floor bathroom
- Sought after location of Old Moulsham
- Approximately 50ft rear garden
- Much improved throughout

An attractive two bedroom Victorian terraced house which has been updated and improved, situated in the much sought after location of Old Moulsham, within walking distance of Chelmsford City Centre and mainline railway station, and close to some highly regarded local schools. Features include: Lounge/dining room with feature fire, fitted kitchen, bedroom one with built in storage, bedroom two, modern first floor bathroom, gas central heating, approximately 50ft rear garden.

NO ONWARD CHAIN - VIEWING ADVISED



Total Area: 59.3 m² ... 638 ft²

Measurements are approximate for illustrative purposes only and may have been taken from the widest area
Floorplan Copyright Equinox Energy Performance Certificates
www.energyperformancecertificates.biz