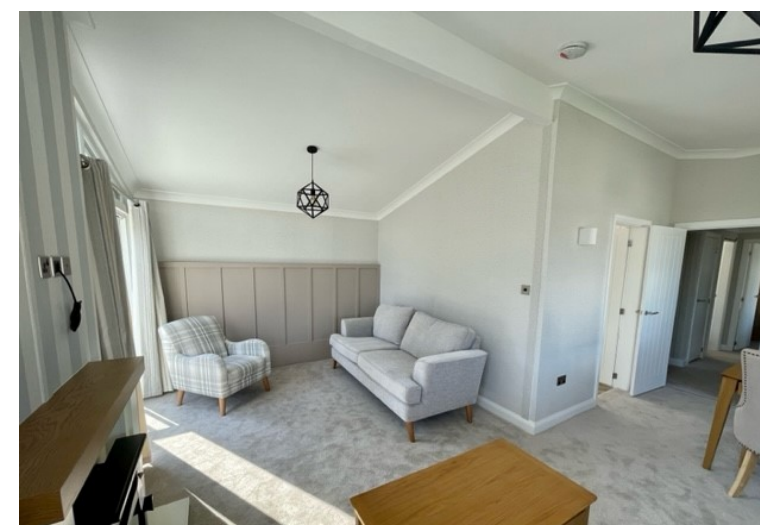
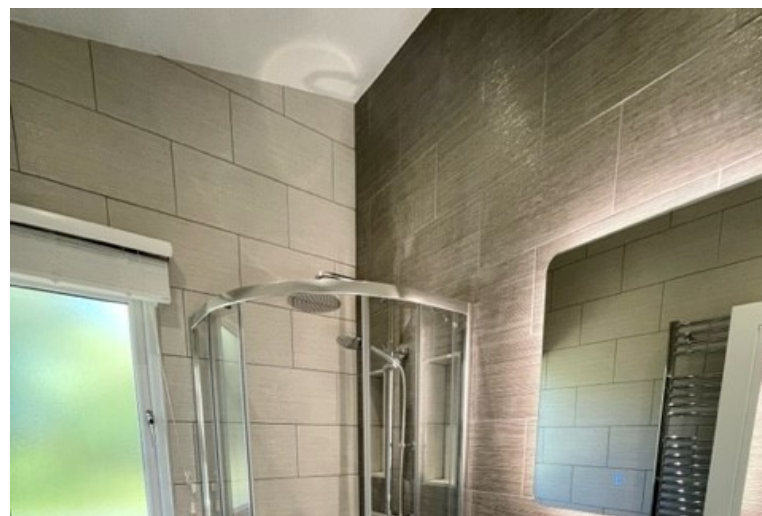




Day & Co
ESTATE AGENTS

28 Cavendish Street
Keighley
BD21 3RG



30 Upwood Park, Oxenhope,
Keighley, West Yorkshire, BD22
9SS

£199,995

T: 01535 664609

W: www.dayandcoestateagents.co.uk

E: keighley@dayandcoestateagents.co.uk

- Stunning Brand New Park Home
 - Quality Fixtures & Fittings Throughout
 - Sought After Rural Location In Oxenhope
 - AVAILABLE FROM JUNE 2023
- Two Bedrooms & Master En-Suite
 - Off-Road Parking/Excellent Access To Haworth
 - Over 50's Only

SUMMARY

****A STUNNING BRAND NEW PARK HOME - SOUGHT AFTER RURAL LOCATION IN OXENHOPE WITH EXCELLENT ACCESS TO THE FAMOUS LITERARY VILLAGE OF HAWORTH!!**** Having 2 bedrooms, master en-suite, quality fittings throughout, parking, OVER 50's only -AVAILABLE JUNE 2023 - IDEAL RETIREMENT HOME!! EPC exmpt.

FULL DESCRIPTION

Available from June 2023 is this fabulous brand new two bedroom park home, situated in this sought after rural location in Oxenhope, with excellent access to the famous literary village of Haworth. The property offers quality fixtures and fittings throughout, and the accommodation comprises of an entrance hall, dining kitchen, spacious lounge; two bedrooms, the master having an en-suite shower room and dressing room, the internal accommodation is completed by the house bathroom. Externally off-road parking and gardens.

The property is situated on the residential section of Upwood Holiday Park, this section is away from the holiday area, so it's quiet; a lovely location for people over the age of 50 looking for security and tranquillity. The advantage of the residential section's proximity to Upwood's holiday facilities is that residents can make use of the restaurant and bar on the park; a place not just to enjoy a meal or snack but to make friends, too. Live entertainment is in the bar every Saturday night. Over in Upwood's holiday section, touring caravans, tents and motorhomes are welcomed. There are camping pods to hire, plus holiday homes to hire and buy – all of which is ideal if you're planning on relatives or friends visiting you.

The world famous literary village of Haworth (home of the Bronte sisters) is close by, having attractions including the famous cobbled main street, Bronte Parsonage Museum, organised Brontë walks which take place most weekends. There are vintage train weekends regularly on the Keighley & Worth Valley Steam Railway, there's an annual beer festival at Oxenhope Station, plus 1940s and 1960s weekends, and music festivals in the nearby area. Steam train enthusiasts will love Upwood's proximity to the Keighley and Worth Valley Steam Railway, which has a programme of special events throughout the year including guided tours of locomotive workshops and even opportunities to get involved and volunteer your services to the heritage railway attraction! This is one of the leading heritage railways in the UK and is among Yorkshire's best known tourist attractions. It is owned, operated and managed principally by volunteers.

