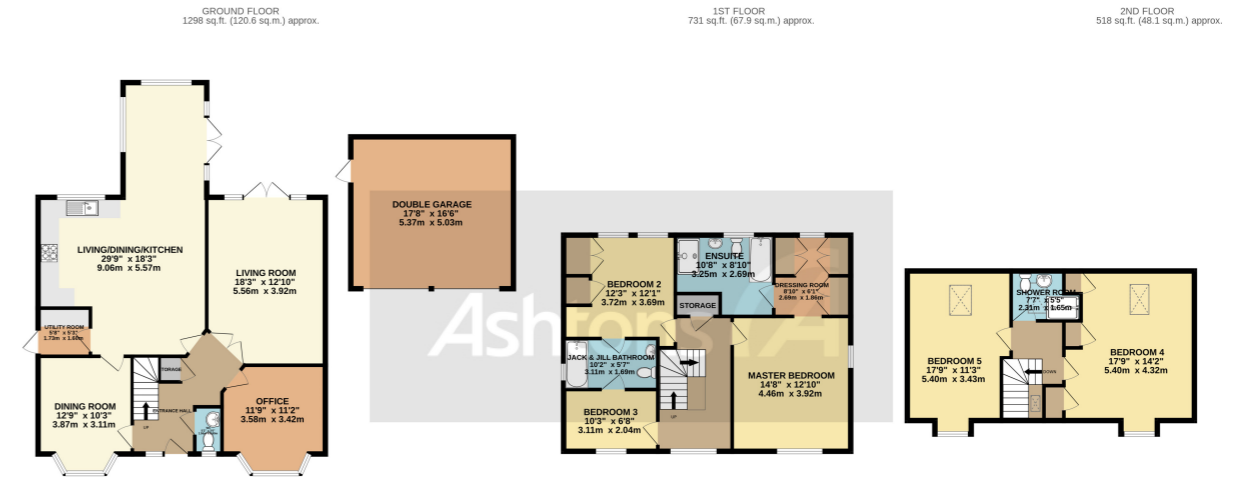


# Bronte Close, Winwick, WA2 £685,000



TOTAL FLOOR AREA: 2546 sq.ft. (236.5 sq.m.) approx.

Whilst every attempt has been made to ensure the accuracy of the floorplan contained here, measurements of doors, windows, rooms and any other items are approximate and no responsibility is taken for any error, omission or mis-statement. This plan is for illustrative purposes only and should be used as such by any prospective purchaser. The services, systems and appliances shown have not been tested and no guarantee as to their operability or efficiency can be given.

Made with Metropix ©2023



Situated along one of the most desirable lanes on Winwick Park, sits this impressive family home with 2500sq ft (approx). This imposing double fronted detached family home gives that feeling of being tucked away, whilst still being conveniently close to the areas numerous amenities such as schools, nursery, bus routes, other local amenities.

See more of this house at [ashtons.net](https://www.ashtons.net)

x 5 x 3

